



MAGYAR  
TURISZTIKAI ÜGYNÖKSÉG

# **PMS – THF – CDGI interfacing aid for developers**

Version v600

31.03.2022

## Content

1. Introduction.....	4
1.1. Summary.....	4
1.2. Acronyms, definitions.....	5
2. How the system functions.....	5
2.1. Architecture.....	5
2.2. Data provision .....	6
2.3. Processing and sending data to the CDGI system. ....	6
3. Authenticity.....	6
3.1. PMS client and signature certificates .....	6
3.2. Accommodation validation message .....	7
3.3. An example for the manual generation of a message and signature .....	7
3.4. The THF certificate .....	8
3.5. PMS-THF interface.....	8
3.6. Status query.....	8
3.7. Guest arrival event-driven message.....	10
3.8. Guest departure event-driven message.....	12
3.9. Examples.....	14
3.9.1. THF status query.....	14
3.9.2. Query of the list of unsent data .....	17
3.9.3. Sending data of arriving guests .....	19
3.9.4. Sending data of departing guests.....	23
3.10. WSDL .....	28
4. Error handling, validation.....	44
4.1. Field validations, error messages .....	44
4.2. Correction.....	50
4.3. Validation rules based on statutory regulations .....	51
4.4. Country codes accepted ba THF .....	51

## List of changes

<b>Version</b>	<b>Date</b>	<b>Reason for change</b>
<b>v100</b>	2021.06.07.	First version
<b>v200</b>	2021.07.31.	THF state code updates
<b>v300</b>	2021.08.23.	Corrections
<b>v400</b>	2021.10.22	Document scanning regulation changes for guest under 14 years of age
<b>V500</b>	2021.12.21	Place of birth field is optional. ISO country code for Kosovo
<b>v600</b>	2022.02.28	List of country codes accepted by THF

# 1. Introduction

## 1.1. Summary

Pursuant to Section 9/H of Act CLVI of 2016 on the State's Responsibilities Regarding the Development of Tourism Regions accommodation operators must transmit the following details on their guests to the CDGI system:

Guest data to be transferred:

- First name and surname
- First name and surname at birth\*
- Date of birth\*
- Place of birth\*
- Mother's first name and surname at birth\*
- Citizenship\*
- Gender\*
- Type of personal identification document or passport
- Document identification number
- Visa or residence permit number\*\*
- Date of entry\*\*
- Place of entry\*\*

Accommodation data to be transferred:

- Accommodation identification number
- Date of commencement of use of accommodation service
- Expected date of end of use of accommodation service
- Actual date of end of use of accommodation service

*\* record only the one of these included in the document presented by the guest*

*\*\* where relevant*

The accommodation management software transfers data through the data transfer module provided by the hosting service provider ("Sender Host", hereinafter "THF"). The data sender module is a computer program sharing the infrastructure running the accommodation management software, receiving data from, and used by, the latter, encrypting and sending the data specified by law to the storage unit.

The accommodation provider must record the data specified in Section 9/H (1) of the Tourism Act through a document reader connected to the accommodation management software. Data which cannot be recorded through the document reader are to be manually recorded in the software by the accommodation provider.

This document contains a description of the functioning of the web service endpoints available for the PMSs and the way they are to be used, to enable accommodation management software manufacturers to develop the necessary interfaces on the sender side in their systems. The document does not cover the interfacing between the PMS and the document reader device or the transfer and processing of the data so input.

## 1.2. Acronyms, definitions

Technical and terms and other acronyms used in this document

PMS – Property Management System, accommodation management software

THF – acronym of the Hungarian term for ‘storage uploader’, a software module for sending data, referred to in the applicable statutory regulation.

CDGI – acronym of the Hungarian term for ‘Closed Database of Guest Information’, a system for receiving and storing encrypted data on guests.

## 2. How the system functions

The data transmission module is to reduce the resource intensity of PMS-side integration development by providing the outsourceable steps of data provision – verification, conversion, encryption, packaging and sending – in the form of off-the-shelf components.

The THF module on the infrastructure of the PMS (or connected with it through a secure channel) is operated on the infrastructure of the accommodation provider or that of the service provider with which the accommodation provider has executed a contract, receiving the data through a standard web service interface.

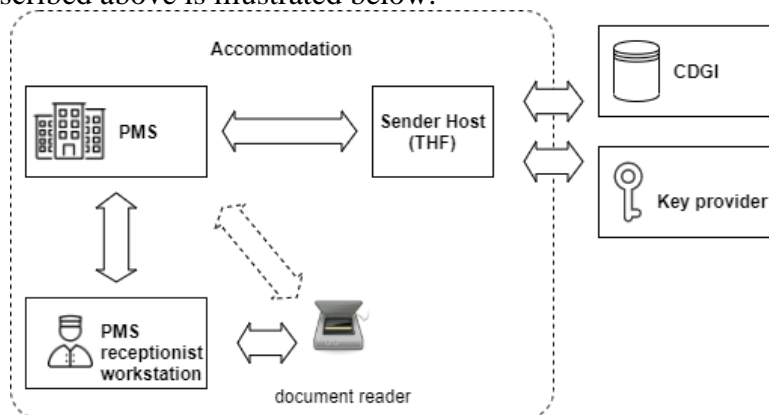
Details of the installation of the THF module are discussed in a separate document.

### 2.1. Architecture

The system’s modules communicate with each other as detailed below:

- The PMS communicates with the document readers (through the workstation or a background system directly or indirectly).
- The PMS reaches the data provision functions through the THF. It communicates directly only with the THF module.
- Only the THF module is authorised to send data to the CDGI system, after encryption as prescribed in the applicable statutory regulation.
- Only the THF is authorised to request an encryption key from the Key Provider for the encryption process stipulated in the applicable statutory regulation.

The structure described above is illustrated below:



## 2.2. Data provision

Data provision is an event-driven process, taking place upon a guest's arrival and departure. The data of the arrival and departure events are transferred by the PMSs to the THF's data reception endpoint in the prescribed data structure.

The PMS assigns a guaranteed unique UID-type technical identifier to every guest arrival data package and sends it in each case in the arrival event data package.

Only the arrival data contain detailed information on the guest concerned; the departure event data package refers to the individual ID of the relevant arrival data package and contains the departure date.

## 2.3. Processing and sending data to the CDGI system.

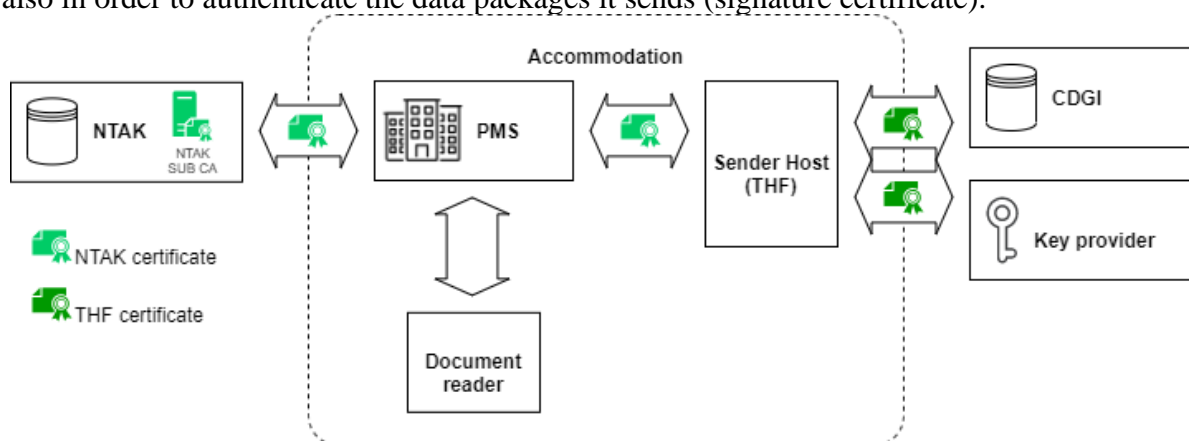
The THF prepares the data received from the PMS for sending them on: arranging the data in a specific data structure, requesting an individual encryption key from the Key Provider for each guest, encrypting the content of the data package to be transmitted and then transmitting them to the CDGI system. Once successfully transmitted, the data package is no longer stored by the THF.

The THF only performs the operations prescribed by law on the data so received and its outcome is not visible to the PMS.

When the THF's attempt to send data to the CDGI system fails, the THF stores the data of the message and the error codes, returning them at the PMS's request in a response message. The PMS is tasked with regularly checking that data transferred to the THF are successfully sent to the CDGI system, and informing the user of any error message. This is discussed in detail in the chapter on status query.

## 3. Authenticity

Mutual verification of the authenticity of the components involved in the communication process is one of the most important functions. To this end, every component uses cryptographic certificates when building up the communication channel (client and server certificates), and also in order to authenticate the data packages it sends (signature certificate).



### 3.1. PMS client and signature certificates

The PMSs authenticate themselves at the THF endpoint using the same NTAK (National Tourism Data Supply Centre (*Nemzeti Turisztikai Adatszolgáltató Központ*)) client certificate with which they have called the endpoint of the NTAK data reception web service and they authenticate the data sent to THF with the same signature certificate and

**the same extra-secure header which they use for authenticating the data sent to the NTAK.**

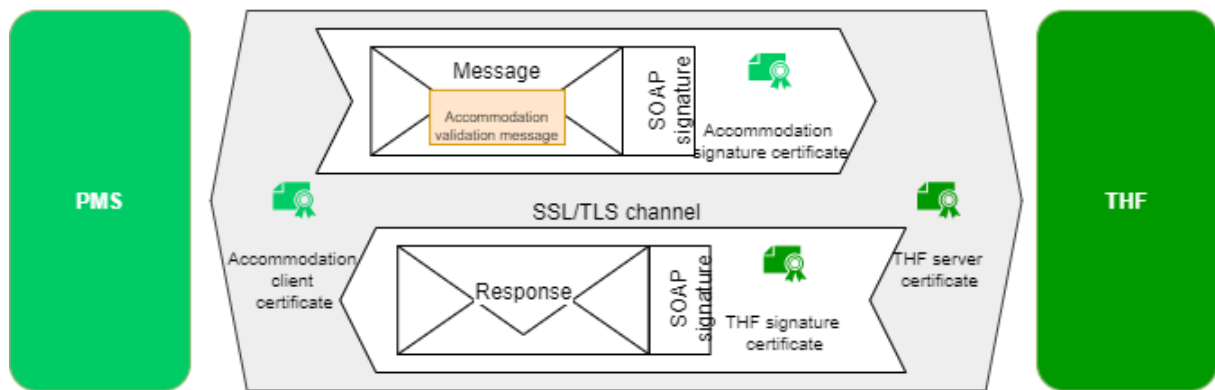
The THF checks the validity of the PMS certificates on a regular basis through OCSP or by CRL query. The THF considers the result of such (OCSP, CRL) checks to be valid for a specific period of time (24 hours).

*Since the MPS can contact any specific THF on behalf of multiple accommodations, the THF must receive every transaction effected with a valid PMS certificate. The THF does not store IDs that are characteristic of the accommodation concerned – i.e. it is not personified regarding the name of the accommodation.*

### 3.2. Accommodation validation message

The messages sent to THF with guest data among others must include data clearly identifying the accommodation concerned, transmitted to be transmitted to the CDGI system in an unchanged form, as put together by the PMS. This is how the CDGI system can authentically associate the guest event with the accommodation concerned.

This is what the so-called “Accommodation Validation Message” is used for, the one that is signed by the PMS with the certificate of the accommodation concerned, and that is handed over to the THF together with the certificate associated with the signature.



The Accommodation Validation Message is to be built up of the following elements:

- NTAK data provision ID (the ID in the CN field of the NTAK certificates of the accommodation) (adatszolgaltatasiAzonosito field – 8 characters)
- The unique IDs of arrival messages (erkezesAzonosito fields of the VendegType elements)
- date of notification (bejelentesIdopontja)

These elements have to be combined by using the '|' (pipe) tab characters. In case of sending more than one guest records in one message, the reception ID shall be listed for all the guests in the message. The imprint of the message must be generated with the SHA-256 algorithm and then it must be signed with the accommodation’s PMS certificate.

### 3.3. An example for the manual generation of a message and signature

The content of the accommodation validation message (*ellenorzoString*):

```
DVQTD1KW|4fd72aa1-e107-46af-9e90-87ce0d570b0f|2021-02-08T11:12:13.632+01:00
```

The signature can be generated in two steps, using OpenSSL. Copy the message in an ellstring.txt file, making sure that there is no newline character at the end of the line.

The following commands must be run under Windows (access path in the Linux command code as appropriate, without “exe” and quotation marks):

```
c:\Program Files\OpenSSL-Win64\bin\openssl.exe" dgst -sha256 -sign cert.pem -out
ellstring.sha256 ellstring.txt
c:\Program Files\OpenSSL-Win64\bin\openssl.exe" base64 -in ellstring.sha256 -out
ellstring.signed
```

Thereafter, the temporary ellstring.sha256 file can be deleted and the signature is generated in the ellstring.signed file in base64 coding. Line breaks must be removed from the signature and then the content can be copied into the “signature” field of the message called **pmsValidaciosUzenet**.

The base64-encoded form of the accommodation’s certificate is to be copied into the alairoTanusitvany field.

The samples concerning the content of the entire SOAP call are presented in 3.9.

### 3.4. The THF certificate

In order to ensure that no counterfeit THF is connected to the PMS, the PMS shall check the validity of the THF certificate.

For the checking, PMS must store the CA certificate and the root CA certificate of the THF certificate issuer, which is made available to the PMS developers by the CDGI operator.

### 3.5. PMS-THF interface

The PMS communicates with the THF through standard SOAP web service calls. THF web service can be accessed at the <https://<thf.server.address>/ws> URL, e. g. the URL of the developer sandbox THF web service endpoint is <https://pms-teszt.thf.hu/ws>.

As has been demonstrated in the previous chapters, the data sent in the messages must correspond to the certificates used for setting up connections and for attaching signatures (the data provision identifier included in the signature certificate of the SOAP message must match the data supply ID in the content of the message – CN field).

The exact specification of such a message is contained in the service’s WSDL descriptor of the service, where the definition of a field is not clear from its name or set of values, the relevant explanation is contained in the documentation tag.

The inaccessibility of the THF cannot block the operation of the accommodation management software, however, it will not exempt the accommodation operator from its obligation to provide data. Guest data may be recorded in the case of the THF module’s failure; once normal operation has been restored data must be transmitted subsequently.

### 3.6. Status query

To maintain the continuity of data provision the THF offers some its internal operational indicators to the PMSs at the status query endpoint (*AllapotLekerdezesRequest*).

The THF responds with the following data:

- allapotKod – the status query response code
- bekuldetlenUzenetekSzama – the number of events to be submitted to the CDGI system.
- hibasUzenetekSzama – the number of events rejected by the CDGI system.
- idoPecset – the time when the answer to the status query is sent.

In the allapotKod field, multiple status indicators may be present, separated with a separator (“|” character).

The first status code is always one of the followings (in “exclusive OR”):



- OK – THF is ready to accept messages from PMS, it can relay the arrival and departure messages to CDGI system, and it can access all services needed for its operation.
- WARNING – THF is ready to accept messages from PMS, but there is a malfunction in its operation.
- ERROR – THF is running, but it can not accept any arrival or departure messages, which it refuses with error messages.

Two latest of the above may require intervention, the operator should be notified when these appear.

Further status codes and their descriptions:

- VIZA-OFFLINE – THF can not access the data collection interface of CDGI, it can not relay any messages. It may appear along the “WARNING” status indicator, until the number of the unsent messages doesn’t reach its threshold. When this threshold is reached, “ERROR” status indicator is returned along instead.
- KM-OFFLINE – THF can not access the encryption key service of the key provider. While it is possible to send data to the CDGI with the keys stored in the encryption key cache, or the number of the unsent messages does not reach its threshold, this is accompanied by the “WARNING” status indicator. May appear along THE “OUTOFKEYS” status code.
- OUTOFKEYS – all the keys were used up from the encryption key cache, therefore THF can not relay any messages to the CDGI. “WARNING” status indicator appears along until the number of the unsent messages doesn’t reach its threshold. When this threshold is reached, “ERROR” status indicator is returned along instead.
- RA-OFFLINE – THF can not reach the renewal end point of the certificate authority, therefore the certificates of the THF can not be renewed. It may appear with “WARNING” within the validity period of the certificate.
- CERT-WARNING – either certificate of the THF is about to expire, and THF couldn’t renew it, this problem needs to be resolved before the certificate expires. This status code may appear along a “WARNING” status code within 30 days before the certificate expires.
- CERT-EXPIRED – either certificate of the THF expired and the THF couldn’t renewed it, therefore the data relaying to CDGI is not possible. It is always accompanied by the “ERROR” status indicator.
- CERT-RENEWED – certificate has been successfully renewed, but operator intervention is required to apply the new certificate. Should THF restart needed for applying the renewed certificate, this status code appears along the RESTART-THF status code.
- RESTART-THF – THF shall be restarted. It appears with “WARNING” status indicator, if the THF can still fully operate, and “ERROR” status indicator is returned along, if THF can not operate until restarted. For example, certificate renewal might require THF restart to apply the new certificates.
- DATA-REJECTED – the number of messages rejected by the CDGI due to data error is not zero (the actual number is shown in a different field). Appears along the “WARNING” status code.

The number of unsent messages is usually zero because the THF immediately processes the data package it has received and then it promptly attempts to send it to the CDGI system. The

counter temporarily switches to 1 for the duration of processing, but in other cases – upon temporary Internet connection failure, during server side maintenance – it may show higher numbers. Intervention may only be necessary when the counter shows numbers higher than 1 for a longer period of time while the CDGI system and the Key Provider are both confirmed to be available and neither one's server is under maintenance.

“Faulty messages” are the ones that are rejected, for any reason, by the CDGI system, and this condition remains unchanged on a permanent basis (when there is no point in making further attempts at sending the message). These messages remain in the THF until this is processed through the service or support channel. If the value of this counter is not zero and is steadily rising, there may be a need for intervention.

The list of the messages to be sent can be queried through a dedicated endpoint (*bekuldetlenAdatListaRequest*), when the counter of a type is not zero, the list contains the message identifier provided by the PMS, the data provision identifier and the error message received from the server.

The status query endpoint must be called at 1...60-minute intervals; more frequent calls would not carry additional useful information but might be an additional burden on the system, while less frequent calls might delay any necessary intervention.

The counter values (or their verbal equivalents) must be displayed clearly visibly on the PMS management and/or operating platform so that users are always informed about the current status of data provision.

Message list queries can be requested by the organisation providing support to the THF, therefore its extraction should be provided with a dedicated function in the PMS.

### 3.7. Guest arrival event-driven message

The business content concerning guests, in an arrival type message. For further details see the chapter on validation and in the wsdl.

Unchanged data transmitted from document reading must be distinguished with the **okmanybolBeolvasottAdat** type name from data entered or modified manually, which are to be indicated with the type name **manualisanRogzítettAdat**. Documents must be entered by document reading as a general rule but if that operation cannot be carried out at all or in full the data of the document concerned must be recorded manually. In some cases faulty data resulting from document reading have to be modified manually in the PMS.

If document reading has taken place, the data generated by the document reader must be inserted unchanged in the arrival message, in a separate group identified as **okmanybolBeolvasottAdat**. The procedure has to be interpreted field by field owing to the different data contents of different documents.

If a data field generated by the document reader from a document needs to be manually corrected, the originally read data must be shown in the message as **okmanybolBeolvasottAdat** together with the manually modified data as **manualisanRogzítettAdat**.

Important: the family name and given name fields should always be handled together in “pairs” in case of name (**csaladnev** and **utonev**), name at birth (**szuletésiCsaladnev** and **szuletésiUtonev**) and mother's maiden name (**anyjaCsaladnev** and **anyjaUtonev**). If either field is changed manually, both fields shall be included in the manually entered data (**manualisanRogzítettAdat**), even if the other field hasn't been changed.

Fields filled out manually in the PMS without using the document reader must be inserted in the message as **manualisanRogzítettAdat**.

	Field	Field name	Type	Content
basic data	Arrival ID	erkezesAzonosito	UUID	The unique ID of the given guest's arrival. The same value has to be transmitted upon the arrival and departure of the given guest to make it possible to connect the guest's departure to their arrival.
	Arrival time	erkezesIdeje	datetime	The exact date and time of checking in. ISO 8601 date and time format, a string of characters complete with time zone.
	Expected date of departure	tavozasVarhatoDatuma	date	The expected date of departure as booked, in the form of a string of characters in YYYY-MM-DD format, e.g. 2020-07-01.
data from document reading (okmánybolBeolvasottAdat)	Family name	csaladnev	string	Family name (surname) of the person using the accommodation.
	Given name	utonev	string	Given name (first name) of the person using the accommodation.
	Family name at birth	szuletesiCsaladnev	string	Family name (surname) at birth of the person using the accommodation.
	Given name at birth	szuletesiUtonev	string	Given name (first name) at birth of the person using the accommodation.
	Date of birth	szuletesiDatum	string	Date of birth of the person using the accommodation.
	Place of birth	szuletesiHely	string	Place of birth of the person using the accommodation.
	Mother's family name	anyjaCsaladnev	string	Family name of the mother of the person using the accommodation.
	Mother's given name	anyjaUtonev	string	Given name of the mother of the person using the accommodation.
	Citizenship code	allampolgarsagKod	string	Code of the user (2-character country code according to ISO 3166-1 alpha-2) [XK for Kosovo]
	Gender	nem	string (enum)	"NO" (female) "FERFI" (male) "EGYEB_VAGY_NEM_ISMERT" (other or unknown)
	Document type	okmanyTipus	string (enum)	"SZEM_IG", (personal identity card) "UTLEVEL", (passport) "VEZ_ENG", (driving licence) "EGYEB" (other)
	Document identification number	okmanyAzonositoSzam	string	

	Field	Field name	Type	Content
manually recorded or modified data (manualisanRogzittettAdat)	Family name	csaladnev	string	Family name (surname) of the person using the accommodation.
	Given name	utonev	string	Given name (first name) of the person using the accommodation.
	Family name at birth	szuletesiCsaladnev	string	Family name (surname) at birth of the person using the accommodation.
	Given name at birth	szuletesiUtonev	string	Given name (first name) at birth of the person using the accommodation.
	Date of birth	szuletesiDatum	string	Date of birth of the person using the accommodation.
	Place of birth	szuletesiHely	string	Place of birth of the person using the accommodation.
	Mother's family name	anyjaCsaladnev	string	Family name of the mother of the person using the accommodation.
	Mother's given name	anyjaUtonev	string	Given name of the mother of the person using the accommodation.
	Citizenship code	allampolgarsagKod	string	Code of the user (2-character country code according to ISO 3166-1 alpha-2) [XK for Kosovo]
	Gender	nem	string (enum)	"NO" (female) "FERFI" (male) "EGYEB_VAGY_NEM_ISMERT" (other or unknown)
	Document type	okmanyTipus	string (enum)	"SZEM_IG", (personal identity card) "UTLEVEL", (passport) "VEZ_ENG", (driving licence) "EGYEB" (other)
	Document identification number	okmanyAzonositoSzam	string	
Data of persons from third countries	Visa / residence permit No.	vizumEngedelySzam	string	Number of the visa or residence permit of the user coming from a third country.
	Date of entry	beutazasDatuma	date	The day on which the third country user entered Hungary.
	Place of entry	beutazasHelye	string	The location where the third country user entered Hungary.

### 3.8. Guest departure event-driven message

The business content concerning guests, in an departure type message. For further details see the chapter on validation and in the wsdl.

Field	Field name	Type	Content
Arrival ID	erkezesAzonosito	UUID	The unique ID of the given guest's arrival. The same value has to be transmitted upon the arrival and departure of the given guest to make it possible to connect the guest's departure to their arrival.

<b>Date of departure</b>	<b>tavozasldeje</b>	<b>datetime</b>	The exact date and time of checking in. ISO 8601 date and time format, a string of characters complete with time zone.
--------------------------	---------------------	-----------------	--

## 3.9. Examples

This subsection presents examples of the contents of the calls.

### 3.9.1. THF status query

#### Request:

```
<soapenv:Envelope xmlns:soapenv="http://schemas.xmlsoap.org/soap/envelope/" xmlns:v1="http://vizainfo.hu/thf/v1">
  <soapenv:Header>
    <wsse:Security xmlns:wsse="http://docs.oasis-open.org/wss/2004/01/oasis-200401-wss-wssecurity-secext-1.0.xsd"
xmlns:wsu="http://docs.oasis-open.org/wss/2004/01/oasis-200401-wss-wssecurity-utility-1.0.xsd">
      <wsu:Timestamp wsu:Id="TS-EA5E546CCB3DD069EA161272361131824">
        <wsu:Created>2021-02-07T18:46:51.317Z</wsu:Created>
        <wsu:Expires>2021-02-08T22:33:31.317Z</wsu:Expires>
      </wsu:Timestamp>
      <wsse:BinarySecurityToken EncodingType="http://docs.oasis-open.org/wss/2004/01/oasis-200401-wss-soap-message-security-
1.0#Base64Binary" ValueType="http://docs.oasis-open.org/wss/2004/01/oasis-200401-wss-x509-token-profile-1.0#X509PKIPathv1" wsu:Id="X509-
EA5E546CCB3DD069EA161272361129419">***BinarySecurityToken***</wsse:BinarySecurityToken>
      <ds:Signature Id="SIG-EA5E546CCB3DD069EA161272361129623" xmlns:ds="http://www.w3.org/2000/09/xmldsig#">
        <ds:SignedInfo>
          <ds:CanonicalizationMethod Algorithm="http://www.w3.org/2001/10/xml-exc-c14n#">
            <ec:InclusiveNamespaces PrefixList="soapenv v1" xmlns:ec="http://www.w3.org/2001/10/xml-exc-c14n#" />
          </ds:CanonicalizationMethod>
          <ds:SignatureMethod Algorithm="http://www.w3.org/2001/04/xmldsig-more#rsa-sha384" />
          <ds:Reference URI="#id-EA5E546CCB3DD069EA161272361129422">
            <ds:Transforms>
              <ds:Transform Algorithm="http://www.w3.org/2001/10/xml-exc-c14n#">
                <ec:InclusiveNamespaces PrefixList="v1" xmlns:ec="http://www.w3.org/2001/10/xml-exc-c14n#" />
              </ds:Transform>
            </ds:Transforms>
            <ds:DigestMethod Algorithm="http://www.w3.org/2000/09/xmldsig#sha1" />
            <ds:DigestValue>8SF8LuIQaaxUnoB30xv5PbBMatM=</ds:DigestValue>
          </ds:Reference>
        </ds:SignedInfo>
        <ds:SignatureValue>GX5GgIN70Ta6BgAdZaPle/KeZDJ6dunKvXzDhBH6qRh5y1K907n8Ppw0bivgMudcG5qu24vH1P2m&#13;
NbUVrndvGzWEPiBp6k8zzyEbmzWB3skbO2IexVqWr6k81yqNqyDCcnBttleRxE9wK35kKOHqFH19&#13;
Kvjest2q/hzcty7GeDsse2nK3m5m/n15278y1cVcmfmDTI7ek7JJwXL11f42Hd3TtdiDatVXZnd3&#13;
e023c1EWBNytd2JqZjz+jMmVxzBWhJmGOeyt7i24LXTWdwt8cANtv20eqKCGfHy8huFRt1AvAdzf&#13;
QXRqtPVDUmk8wsIIT918vQLIL7y+LUDruIxrV1HHhm7xbwqGE4ILdIFZn4i0Fi22IwW+o+Y9nsb&#13;
3kh3EcdWVrS53ej1Pb75xwJ5h/4yJ60NC1ixUA3EytZ29GVvdRiVHPYbRCm38TykJMIUxHJz1kfG&#13;
fOSLoMFkQS3CFvf+x/eaDoxNj8zDcz1SXBmWr9rmLb64uzvGhNgFAElykKbrbjgnGpk4hCNQmYhX&#13;
DZJjYrZ8VPQuzPhx7EdW8coAiYNG3N/1shTNvU13rRfcbcdAehINful+SqGvLLdMj7qP6vu6kZHR&#13;
a4kgMENRjcpatw0agrB0/MYwZSSXGU1HqqXtKGZGvVCRWwp9/8zsYeMG9nJ16WJGYW/L9Lm/Dp0=</ds:SignatureValue>
        <ds:KeyInfo Id="KI-EA5E546CCB3DD069EA161272361129420">
```

```

        <wsse:SecurityTokenReference wsse11:TokenType="http://docs.oasis-open.org/wss/2004/01/oasis-200401-wss-x509-token-profile-1.0#X509PKIPathv1" wsu:Id="STR-EA5E546CCB3DD069EA161272361129421" xmlns:wsse11="http://docs.oasis-open.org/wss/oasis-wss-wssecurity-secext-1.1.xsd">
            <wsse:Reference URI="#X509-EA5E546CCB3DD069EA161272361129419" ValueType="http://docs.oasis-open.org/wss/2004/01/oasis-200401-wss-x509-token-profile-1.0#X509PKIPathv1"/>
        </wsse:SecurityTokenReference>
    </ds:KeyInfo>
</ds:Signature>
</wsse:Security>
</soapenv:Header>
<soapenv:Body wsu:Id="id-EA5E546CCB3DD069EA161272361129422" xmlns:wsu="http://docs.oasis-open.org/wss/2004/01/oasis-200401-wss-wssecurity-utility-1.0.xsd">
    <v1:allapotLekerdezesRequest />
</soapenv:Body>
</soapenv:Envelope>

```

## Response:

```

<SOAP-ENV:Envelope xmlns:SOAP-ENV="http://schemas.xmlsoap.org/soap/envelope/">
    <SOAP-ENV:Header>
        <wsse:Security xmlns:wsse="http://docs.oasis-open.org/wss/2004/01/oasis-200401-wss-wssecurity-secext-1.0.xsd"
xmlns:wsu="http://docs.oasis-open.org/wss/2004/01/oasis-200401-wss-wssecurity-utility-1.0.xsd">
            <wsse:BinarySecurityToken EncodingType="http://docs.oasis-open.org/wss/2004/01/oasis-200401-wss-soap-message-security-1.0#Base64Binary" ValueType="http://docs.oasis-open.org/wss/2004/01/oasis-200401-wss-x509-token-profile-1.0#X509v3" wsu:Id="X509-67976b8c-9536-441d-8327-454b0d02143f">***BinarySecurityToken***</wsse:BinarySecurityToken>
            <wsu:Timestamp wsu:Id="TS-c9a94e87-3512-4394-9d76-cc31fe00facf">
                <wsu:Created>2021-02-07T18:46:52.576Z</wsu:Created>
                <wsu:Expires>2021-02-07T18:51:52.576Z</wsu:Expires>
            </wsu:Timestamp>
            <wsse11:SignatureConfirmation Value="GX5GgIN70Ta6BgAdZaPle/KeZDJ6dunKvXzDhBH6qRh5y1K907n8Ppw0bivgMudcG5qu24vH1P2mNbUVrndvGzWEPiBp6k8zzyEbmzWB3skb02IexVqWr6k8lyqNqyDCcnBttleRxE9wK35kKOHqFH19Kvjest2q/hzcty7GeDsse2nK3m5m/n15278ylcVcmfmDTI7ek7JJwXLl1f42Hd3TtdiDatVXZnd3e023clEWBNytd2JqZjz+jMmVxzbWhJmGOeyt7i24LXTWdut8cANtv20eqKCGfHy8huFRt1AvAdzfQXRqtPVDUmK8wsIIT918vQLIL7y+LUDruIwxRV1HHhm7xbwqGE4ILdIFZn4i0Fi22IwW+o+Y9nsb3kh3EcdWVrS53ej1Pb75xwJ5h/4yJ60NC1ixUA3EyTZZ9GVvdRiVHPYbRCm38TykJMIUxHJz1kfGfOSLoMfKQS3CFvf+x/eaDOxNj8zDczLSXBmWr9rmLb64uzvGhNgFAElykKbrbjgnGpk4hCNQmYhXDZJjYrZ8VPQuzPhx7EdW8coAIyNG3N/1shTNvU13rRfcbcdAehINful+SqGvLLdMj7qP6vu6kZHra4kgMENRjcpatw0agrB0/MYwZSSXGU1HqqXtKGZGvCvRwWp9/8zsYeMG9nJ16WJGYW/L9Lm/Dp0=" wsu:Id="SC-f65b7b23-0ad2-45d6-9eff-042533ed808f"
xmlns:wsse11="http://docs.oasis-open.org/wss/oasis-wss-wssecurity-secext-1.1.xsd"/>
                <ds:Signature Id="SIG-a231a419-4222-44db-9ca8-e7485be82199" xmlns:ds="http://www.w3.org/2000/09/xmldsig#">
                    <ds:SignedInfo>
                        <ds:CanonicalizationMethod Algorithm="http://www.w3.org/2001/10/xml-exc-c14n#">
                            <ec:InclusiveNamespaces PrefixList="SOAP-ENV" xmlns:ec="http://www.w3.org/2001/10/xml-exc-c14n#" />
                        </ds:CanonicalizationMethod>
                        <ds:SignatureMethod Algorithm="http://www.w3.org/2001/04/xmldsig-more#rsa-sha384" />
                        <ds:Reference URI="#id-7851e069-7870-4f1e-816e-16fc8f917070">
                            <ds:Transforms>
                                <ds:Transform Algorithm="http://www.w3.org/2001/10/xml-exc-c14n#" />
                            </ds:Transforms>
                        <ds:DigestMethod Algorithm="http://www.w3.org/2001/04/xmldsig-more#sha384" />
                    </ds:SignedInfo>
                </ds:Signature>
            </wsse11:SignatureConfirmation>
        </wsse:Security>
    </SOAP-ENV:Header>
    <SOAP-ENV:Body>
        <v1:allapotLekerdezesRequest />
    </SOAP-ENV:Body>
</SOAP-ENV:Envelope>

```

```

        <ds:DigestValue>90nGxvwfLzkLQqFadBvPUB/1DsFAadgIecS/hBhyVq+bb+92LXPlspCt+jpTccTe</ds:DigestValue>
    </ds:Reference>
    <ds:Reference URI="#TS-c9a94e87-3512-4394-9d76-cc31fe00facf">
        <ds:Transforms>
            <ds:Transform Algorithm="http://www.w3.org/2001/10/xml-exc-c14n#">
                <ec:InclusiveNamespaces PrefixList="wsse SOAP-ENV"
            </ds:Transform>
        </ds:Transforms>
        <ds:DigestMethod Algorithm="http://www.w3.org/2001/04/xmldsig-more#sha384"/>
        <ds:DigestValue>GOD7grUb4oBKSPty2anlp8rKhaQcpFG4lsKXCUJ9cXYwfSEvc9qfalZhwLL4lskx</ds:DigestValue>
    </ds:Reference>
    <ds:Reference URI="#SC-f65b7b23-0ad2-45d6-9eff-042533ed808f">
        <ds:Transforms>
            <ds:Transform Algorithm="http://www.w3.org/2001/10/xml-exc-c14n#">
                <ec:InclusiveNamespaces PrefixList="wsse SOAP-ENV"
            </ds:Transform>
        </ds:Transforms>
        <ds:DigestMethod Algorithm="http://www.w3.org/2001/04/xmldsig-more#sha384"/>
        <ds:DigestValue>SSlhSvBwnpbR/3XWlTTkftzF56nQ/eciOJKhzLWlaPNkAGGFaJEseuGFkbfkuVi</ds:DigestValue>
    </ds:Reference>
    </ds:SignedInfo>
    <ds:SignatureValue>pzGvc+TBYrb3KxyQZyvM4nF3p5Q/smWk93Rj6zxJQwRiFXJVanqIZlcD50OrKI77+yvJeLCr/1/H
ksUJ8wNrA0vnV3ZZDMmI7BiXCRfjGv4ouVdp/e4gIvpo6xYyp+BM6vAJqlCIWVsjoYLeMTPaK0Je
0AaAm7NBrZpqpONPHY6gjkln+NfzM6zrhvdEgIVcaKPHDvISg4rTPB//Xq6XSQMeP0QcE1U7vXs
2Ek1IXNTkwVyTbYY8S5catyeUwuUM9wssvxt08ocMVqblPR4RXOx3eT/c3Vqa5RBzFr06pmjG+j/ pagCv2xMH0tsVRE/mdaeZLZOjC/u4as8K26A8Q==</ds:SignatureValue>
    <ds:KeyInfo Id="KI-cd6c279e-b043-46e5-81de-7606985c3f21">
        <wsse:SecurityTokenReference wsu:Id="STR-65849231-b9a2-4be8-8145-61afbe60b1dc">
            <wsse:Reference URI="#X509-67976b8c-9536-441d-8327-454b0d02143f" ValueType="http://docs.oasis-
open.org/wss/2004/01/oasis-200401-wss-x509-token-profile-1.0#X509v3"/>
        </wsse:SecurityTokenReference>
    </ds:KeyInfo>
</ds:Signature>
</wsse:Security>
</SOAP-ENV:Header>
<SOAP-ENV:Body wsu:Id="id-7851e069-7870-4f1e-816e-16fc8f917070" xmlns:wsu="http://docs.oasis-open.org/wss/2004/01/oasis-200401-wss-
wssecurity-utility-1.0.xsd">
    <ns2:allapotLekerdezsesResponse xmlns:ns2="http://vizainfo.hu/thf/v1">
        <ns2:szoftverVerzio>1.0</ns2:szoftverVerzio>
        <ns2:allapotKod>Ok</ns2:allapotKod>
        <ns2:bekuldetlenUzenetekSzama>0</ns2:bekuldetlenUzenetekSzama>
        <ns2:hibasUzenetekSzama>0</ns2:hibasUzenetekSzama>
        <ns2:idoPecset>2021-02-07T19:46:52.573+01:00</ns2:idoPecset>
    </ns2:allapotLekerdezsesResponse>
</SOAP-ENV:Body>
</SOAP-ENV:Envelope>

```



### 3.9.2. Query of the list of unsend data

#### Request (with „NEMBEKULDOTT” (unsend) data type):

```
<soapenv:Envelope xmlns:soapenv="http://schemas.xmlsoap.org/soap/envelope/" xmlns:v1="http://vizainfo.hu/thf/v1">
  <soapenv:Header>
    <wsse:Security xmlns:wsse="http://docs.oasis-open.org/wss/2004/01/oasis-200401-wss-wssecurity-secext-1.0.xsd"
xmlns:wsu="http://docs.oasis-open.org/wss/2004/01/oasis-200401-wss-wssecurity-utility-1.0.xsd">
      <wsu:Timestamp wsu:Id="TS-EA5E546CCB3DD069EA1612730934157498">
        <wsu:Created>2021-02-07T20:48:54.157Z</wsu:Created>
        <wsu:Expires>2021-02-09T00:35:34.157Z</wsu:Expires>
      </wsu:Timestamp>
      <wsse:BinarySecurityToken EncodingType="http://docs.oasis-open.org/wss/2004/01/oasis-200401-wss-soap-message-security-
1.0#Base64Binary" ValueType="http://docs.oasis-open.org/wss/2004/01/oasis-200401-wss-x509-token-profile-1.0#X509PKIPathv1" wsu:Id="X509-
EA5E546CCB3DD069EA1612730934137493">***BinarySecurityToken***</wsse:BinarySecurityToken>
      <ds:Signature Id="SIG-EA5E546CCB3DD069EA1612730934139497" xmlns:ds="http://www.w3.org/2000/09/xmldsig#">
        <ds:SignedInfo>
          <ds:CanonicalizationMethod Algorithm="http://www.w3.org/2001/10/xml-exc-c14n#">
            <ec:InclusiveNamespaces PrefixList="soapenv v1" xmlns:ec="http://www.w3.org/2001/10/xml-exc-c14n#" />
          </ds:CanonicalizationMethod>
          <ds:SignatureMethod Algorithm="http://www.w3.org/2001/04/xmldsig-more#rsa-sha384" />
          <ds:Reference URI="#id-EA5E546CCB3DD069EA1612730934137496">
            <ds:Transforms>
              <ds:Transform Algorithm="http://www.w3.org/2001/10/xml-exc-c14n#">
                <ec:InclusiveNamespaces PrefixList="v1" xmlns:ec="http://www.w3.org/2001/10/xml-exc-c14n#" />
              </ds:Transform>
            </ds:Transforms>
            <ds:DigestMethod Algorithm="http://www.w3.org/2000/09/xmldsig#sha1" />
            <ds:DigestValue>nhs7yanWsnit9B8pG+4U4qvWnQE=</ds:DigestValue>
          </ds:Reference>
        </ds:SignedInfo>
        <ds:SignatureValue>oBI4stkbrBdwywxNlkARRD5307gPJLrskTC2ch/dkhlVZ2erCg0j+ErqgW6f6gupDzn7IVwaTfs&#13;
so2Ng07sQcdIvSFztOMHEWkytC0kquELmrwXWGkaYL1UQsOsQQNKc2hdmNvMbzsbyzKz9e7t6B0&#13;
UDnWtGtpDQ9F2YD/KVmbizlMeQaCqLsYmHGg1U7ZDxVRasjFlsG2e38Dao5nkGDv3AuTMDJuix5h&#13;
0RsBt8MlqsFWWLv2z0qTtk5tLoaxBZLaxMQgBCD6pgri77OteA98poMZ/M5wJONIfhCp88DDwhAf&#13;
OjFWHW6hcdsHx3SXEAfPB4cJkaeRLG7RgAj6S8/hHdiKrzOdEseaVgAsvtJQ2uaFWYBjm6PL0k2q&#13;
7pTnHWC7VdeEWy3nhUcnoFLj73xGI5f4kXoLDxPaQEfvRjMXJDt1jLAljXqeUBqQoXqgzy8g09oD&#13;
ujdETwGxJhv1DN012oCYX+njlGhUtZiJpoPCKRLEKQF+jpb1v+ncxQlimWtxHXh3wlopbcX0q4L&#13;
9ZyOBGu1B1UTlr8HjgxTHzxNsRiAwW9wbnI4gL56+fAMOp2xTOPu0cKwQei0ex2/sV63d2GwW04K&#13;
CkVl208jYJSrrmkooSGRv6vE3u/xEinjnavkJ/vnJzPlxQzL163aJkXvGKvb2PJGVH5p23CvB74=</ds:SignatureValue>
        <ds:KeyInfo Id="KI-EA5E546CCB3DD069EA1612730934137494">
          <wsse:SecurityTokenReference wssell:TokenType="http://docs.oasis-open.org/wss/2004/01/oasis-200401-wss-x509-token-profile-
1.0#X509PKIPathv1" wsu:Id="STR-EA5E546CCB3DD069EA1612730934137495" xmlns:wssell="http://docs.oasis-open.org/wss/oasis-wss-wssecurity-secext-
1.1.xsd">
            <wsse:Reference URI="#X509-EA5E546CCB3DD069EA1612730934137493" ValueType="http://docs.oasis-open.org/wss/2004/01/oasis-
200401-wss-x509-token-profile-1.0#X509PKIPathv1" />
          </wsse:SecurityTokenReference>
        </ds:KeyInfo>
      </ds:Signature>
    </wsse:Security>
  </soapenv:Header>
</soapenv:Envelope>
```

```

    </wsse:Security>
  </soapenv:Header>
  <soapenv:Body wsu:Id="id-EA5E546CCB3DD069EA1612730934137496" xmlns:wsu="http://docs.oasis-open.org/wss/2004/01/oasis-200401-wss-wssecurity-utility-1.0.xsd">
    <v1:bekuldetlenAdatListaRequest>
      <v1:bekuldetlenAdatTipus>NEMBEKULDOTT</v1:bekuldetlenAdatTipus>
    </v1:bekuldetlenAdatListaRequest>
  </soapenv:Body>
</soapenv:Envelope>

```

## Response (blank list, no data unsent):

```

<SOAP-ENV:Envelope xmlns:SOAP-ENV="http://schemas.xmlsoap.org/soap/envelope/">
  <SOAP-ENV:Header>
    <wsse:Security xmlns:wsse="http://docs.oasis-open.org/wss/2004/01/oasis-200401-wss-wssecurity-secext-1.0.xsd"
xmlns:wsu="http://docs.oasis-open.org/wss/2004/01/oasis-200401-wss-wssecurity-utility-1.0.xsd">
      <wsse:BinarySecurityToken EncodingType="http://docs.oasis-open.org/wss/2004/01/oasis-200401-wss-soap-message-security-1.0#Base64Binary" Value="http://docs.oasis-open.org/wss/2004/01/oasis-200401-wss-x509-token-profile-1.0#X509v3" wsu:Id="X509-d50832f8-6290-4494-bb6a-b9d639a3d03c">***BinarySecurityToken***</wsse:BinarySecurityToken>
      <wsu:Timestamp wsu:Id="TS-4cf0e2e4-2951-44e8-aa47-2e037ab5dc64">
        <wsu:Created>2021-02-07T20:48:55.536Z</wsu:Created>
        <wsu:Expires>2021-02-07T20:53:55.536Z</wsu:Expires>
      </wsu:Timestamp>
      <wsse11:SignatureConfirmation Value="oBIt4stkbrBdwywxNlkARRD5307gPJLrskTC2ch/dkh1VZ2erCg0j+ErqgW6f6gupDzn7IVwaTfs
so2Ng07sQcdIfvSFztOMHEWkYtC0kweELmrwXWGkaYL1UQsOsQQNkc2hdmNvMbzsbzyKz9e7t6B0
UDnWtGtpDQ9F2YD/KVMbizlMeQaCqLsYmHGg1U7ZDxVRasjFlsG2e38Dao5nkGDv3AuTMDJuix5h
0RsBt8MlqsFWWLV2z0qTtk5tLOaxBZLAXMQgBCD6pgri770teA98pOmZ/M5wJONIfhCp88DDwhAf
OjFWHw6hcdsHx3SXEAFPB4cJkaeRLG7RgAj6S8/hHdiKrZOdEseaVgAsvtJQ2uaFWYBjm6PL0k2q
7pTnHWC7VdeEWy3nhUcnoFLj73xGI5f4kXo1DxPaQEfvRjMXJDT1jLA1jXqeUBqQoXqgzY8gO9oD
ujdETwGxJhv1DNO12oCYX+njlGbhUtZIJpoPCKRLEKQF+jpb1V+ncxQlimWtxHXh3wlopbcX0q4L
9ZyOBGu1B1UTlr8HjgxTHzxNsRiAwW9wbnI4gL56+fAMOp2xTOPu0cKwQei0ex2/sV63d2GwW04K
CkV1208jYJSrrmkooSGRx6vE3u/xEinjnavkJ/vnJzPlxQzL163aJkXvGKvb2PJGVH5p23CvB74=" wsu:Id="SC-b8299110-770d-4725-8422-4459b34bd71e"
xmlns:wsse11="http://docs.oasis-open.org/wss/oasis-wss-wssecurity-secext-1.1.xsd"/>
        <ds:Signature Id="SIG-544086bd-d83f-44c7-a482-543c4d25afaa" xmlns:ds="http://www.w3.org/2000/09/xmldsig#">
          <ds:SignedInfo>
            <ds:CanonicalizationMethod Algorithm="http://www.w3.org/2001/10/xml-exc-c14n#">
              <ec:InclusiveNamespaces PrefixList="SOAP-ENV" xmlns:ec="http://www.w3.org/2001/10/xml-exc-c14n#" />
            </ds:CanonicalizationMethod>
            <ds:SignatureMethod Algorithm="http://www.w3.org/2001/04/xmldsig-more#rsa-sha384" />
            <ds:Reference URI="#id-f1981320-a080-40e4-9549-5d161ac54c35">
              <ds:Transforms>
                <ds:Transform Algorithm="http://www.w3.org/2001/10/xml-exc-c14n#" />
              </ds:Transforms>
              <ds:DigestMethod Algorithm="http://www.w3.org/2001/04/xmldsig-more#sha384" />
              <ds:DigestValue>vEpMOM2vUqS8YaZia4Y7JWzJOzBT3au3LI+9TCfEUkciCgjPd2ScvFoJydbbRF4N</ds:DigestValue>
            </ds:Reference>
            <ds:Reference URI="#TS-4cf0e2e4-2951-44e8-aa47-2e037ab5dc64">
              <ds:Transforms>
                <ds:Transform Algorithm="http://www.w3.org/2001/10/xml-exc-c14n#">
                  <ec:InclusiveNamespaces PrefixList="wsse SOAP-ENV" xmlns:ec="http://www.w3.org/2001/10/xml-exc-c14n#" />
                </ds:Transform>
              </ds:Transforms>
            </ds:Reference>
          </ds:SignedInfo>
        </ds:Signature>
      </wsse:Security>
    </SOAP-ENV:Header>
  </SOAP-ENV:Envelope>

```

```

        </ds:Transform>
    </ds:Transforms>
    <ds:DigestMethod Algorithm="http://www.w3.org/2001/04/xmldsig-more#sha384"/>
    <ds:DigestValue>DZHJaVGaBs+3w18kFNaxjI5dJF8I3L7n6E4FcfhfDfstuk/O7X1GHG1OXgAAieqj</ds:DigestValue>
</ds:Reference>
<ds:Reference URI="#SC-b8299110-770d-4725-8422-4459b34bd71e">
    <ds:Transforms>
        <ds:Transform Algorithm="http://www.w3.org/2001/10/xml-exc-c14n#">
            <ec:InclusiveNamespaces PrefixList="wsse SOAP-ENV" xmlns:ec="http://www.w3.org/2001/10/xml-exc-c14n#"/>
        </ds:Transform>
    </ds:Transforms>
    <ds:DigestMethod Algorithm="http://www.w3.org/2001/04/xmldsig-more#sha384"/>
    <ds:DigestValue>oc4FwfJGC9bbdkIGoXaOmynounRHfGR0NPdlWWzttoh12SHAoMmxOqWuZjrqAAzO</ds:DigestValue>
</ds:Reference>
</ds:SignedInfo>
    <ds:SignatureValue>15oEuIZh5Eb2Zqsd48dh0vm/3qU1vnd/HsFVSWdgCAEE7NtS8I/Z/Y8WFXDkjRkD0ZmoD0BBP4oN
1FJFSsvkM5Iab54DJEGoS177/8owGcXDS5YjH4PzpDDW9Ulcq1kvwtYoWVaAGY7ZM36XdGeb8RSz
oWfJfX2+Jju1mrqNTXv/Ty92tL8gEwyvdrreqdVHT18beydKfEKbZbKm6PvyQb41uAJXH4PAN3wU
BxSQIbShKjeIbShUaFVlilFkloFY+cTBppiBwM2oNkb8LTVX9i00q3cil8UqcfCytprRCiqAx1XD Np0GQH1MD/YwvqHjD/YRvATCroiwbW2T65nX4w==</ds:SignatureValue>
    <ds:KeyInfo Id="KI-aa4dbb77-f57c-42a1-8950-f220bf14d212">
        <wsse:SecurityTokenReference wsu:Id="STR-3ab2308f-f37a-41a3-a3ad-f02fee6a2a55">
            <wsse:Reference URI="#X509-d50832f8-6290-4494-bb6a-b9d639a3d03c" ValueType="http://docs.oasis-open.org/wss/2004/01/oasis-
200401-wss-x509-token-profile-1.0#X509v3"/>
        </wsse:SecurityTokenReference>
    </ds:KeyInfo>
</ds:Signature>
</wsse:Security>
</SOAP-ENV:Header>
<SOAP-ENV:Body wsu:Id="id-f1981320-a080-40e4-9549-5d161ac54c35" xmlns:wsu="http://docs.oasis-open.org/wss/2004/01/oasis-200401-wss-
wssecurity-utility-1.0.xsd">
    <ns2:bekuldetlenAdatListaResponse xmlns:ns2="http://vizainfo.hu/thf/v1">
        <ns2:eredmenyKod>OK</ns2:eredmenyKod>
    </ns2:bekuldetlenAdatListaResponse>
</SOAP-ENV:Body>
</SOAP-ENV:Envelope>

```

### 3.9.3. Sending data of arriving guests

#### Request:

```

<soapenv:Envelope xmlns:soapenv="http://schemas.xmlsoap.org/soap/envelope/" xmlns:v1="http://vizainfo.hu/thf/v1">
    <soapenv:Header>
        <wsse:Security xmlns:wsse="http://docs.oasis-open.org/wss/2004/01/oasis-200401-wss-wssecurity-secext-1.0.xsd"
xmlns:wsu="http://docs.oasis-open.org/wss/2004/01/oasis-200401-wss-wssecurity-utility-1.0.xsd">
            <wsu:Timestamp wsu:Id="TS-EA5E546CCB3DD069EA1612785329761564">
                <wsu:Created>2021-02-08T11:55:29.761Z</wsu:Created>
                <wsu:Expires>2021-02-09T15:42:09.761Z</wsu:Expires>
            </wsu:Timestamp>

```



```

+6KCCKuYnCGPnOspOTWnJTK3AJryQmD2Ba/7piFG/lzlRoqITtbhv+VMW0Xv/drW+P/NbsCWjHEginYebjqLsKECqOmcSlg4q1F4iSE7errBGOLtHTgcOPV807TBFkrmpSxtKcDN4v1qjjZQG
DKHNJvk/Igfhd5u/FY2dfTiaw7gUiYlQUucmTaFftfPF6tAYP/oKu7RZeFJUOuo/xSKnDSTy/7fFme0BCE9Xqwal+boA45kMAUGbVuyscQPXN3y1HRs=</v1:alairas>
</v1:pmsValidaciosUzenet>
<!--1 to 10 repetitions:-->
<v1:erkezoVendeg>
  <v1:erkezesAzonosito>4fd72aa1-e107-46af-9e90-87ce0d570b0f</v1:erkezesAzonosito>
  <v1:erkezesIdeje>2021-01-05T10:15:12.011+01:00</v1:erkezesIdeje>
  <v1:tavozasVarhatoDatuma>2021-01-15</v1:tavozasVarhatoDatuma>
  <!--Optional:-->
  <v1:manualisanRogzitetttAdat>
    <v1:csaladnev>Győri</v1:csaladnev>
    <v1:utonev>Tünde</v1:utonev>
    <v1:szuletesiCsaladnev>Győri</v1:szuletesiCsaladnev>
    <v1:szuletesiUtonev>Tünde</v1:szuletesiUtonev>
    <v1:szuletesiDatum></v1:szuletesiDatum>
    <v1:szuletesiHely></v1:szuletesiHely>
    <v1:anyjaCsaladnev>Vidovics</v1:anyjaCsaladnev>
    <v1:anyjaUtonev>Anna</v1:anyjaUtonev>
    <v1:allampolgarsagKod></v1:allampolgarsagKod>
    <v1:nem></v1:nem>
    <v1:okmanyTipus></v1:okmanyTipus>
    <v1:okmanyAzonositoSzam></v1:okmanyAzonositoSzam>
  </v1:manualisanRogzitetttAdat>
  <v1:okmanybolBeolvasottAdat>
    <v1:csaladnev>GYORI</v1:csaladnev>
    <v1:utonev>TUNDE</v1:utonev>
    <v1:szuletesiCsaladnev></v1:szuletesiCsaladnev>
    <v1:szuletesiUtonev></v1:szuletesiUtonev>
    <v1:szuletesiDatum>1965-12-07</v1:szuletesiDatum>
    <v1:szuletesiHely>Debrecen</v1:szuletesiHely>
    <v1:anyjaCsaladnev>VOOVICS</v1:anyjaCsaladnev>
    <v1:anyjaUtonev>ANNA</v1:anyjaUtonev>
    <v1:allampolgarsagKod>HU</v1:allampolgarsagKod>
    <v1:nem>NO</v1:nem>
    <v1:okmanyTipus>SZEM_IG</v1:okmanyTipus>
    <v1:okmanyAzonositoSzam>800001XY</v1:okmanyAzonositoSzam>
  </v1:okmanybolBeolvasottAdat>
  <v1:vizumEngedelySzam>VE123456</v1:vizumEngedelySzam>
  <v1:beutazasDatuma>2020-11-22</v1:beutazasDatuma>
  <v1:beutazasHelye>Turku</v1:beutazasHelye>
</v1:erkezoVendeg>
</v1:keresAdat>
</v1:erkezesiAdatokBekuldeseRequest>
</soapenv:Body>
</soapenv:Envelope>

```

## Response:

```

<SOAP-ENV:Envelope xmlns:SOAP-ENV="http://schemas.xmlsoap.org/soap/envelope/">
  <SOAP-ENV:Header>

```

```

<wsse:Security xmlns:wsse="http://docs.oasis-open.org/wss/2004/01/oasis-200401-wss-wssecurity-secext-1.0.xsd"
xmlns:wsu="http://docs.oasis-open.org/wss/2004/01/oasis-200401-wss-wssecurity-utility-1.0.xsd">
  <wsse:BinarySecurityToken EncodingType="http://docs.oasis-open.org/wss/2004/01/oasis-200401-wss-soap-message-security-
1.0#Base64Binary" ValueType="http://docs.oasis-open.org/wss/2004/01/oasis-200401-wss-x509-token-profile-1.0#X509v3" wsu:Id="X509-1e2e3565-5ed7-
43c3-9bc2-89a3314c758c">***BinarySecurityToken***</wsse:BinarySecurityToken>
  <wsu:Timestamp wsu:Id="TS-219b1df9-0031-42d1-8e3b-c329460c0018">
    <wsu:Created>2021-02-08T11:55:30.822Z</wsu:Created>
    <wsu:Expires>2021-02-08T12:00:30.822Z</wsu:Expires>
  </wsu:Timestamp>
  <wsse11:SignatureConfirmation Value="mCVWxn3zqm46nx9RzjPmQWjrrQZc9ZKZuCDDeEMqKCFjSoGA1kG0Gm28XVC3s/5R651NCGIBFaxuV
we1P5JCEJisIBgNljt+Ls5NcOBlm0CGPRKVPKmpOPxuOMYCJtkFG9mU42dIDD6on0wQHBmd7b/H5T
Mknb4jLFFFFr0uG5PNJF11D2p4oP7DZJcg98qLv+2LV3krsUxZjhEuMSzVFvYWCv0qUA0SqzpgRRV
YwsUCmI36Yw1TEqulmC67HEpP8ulrvOnciACStIY9MT3NGYk5wWvqhNAZgH+IjB6LM79g8jIx2ni
IVCCndjER8qXCH/3d4NHM3hvQ0FwRZY5adWuwxaKoDRQAYEsRPNdNtoxdF6Ne853FVZ3EtBG15vw
H3mFEyfL0k589TqHpOc9Q4vltb3JIRvEcjnja84fyrGR+8N1/X7QkkfF9hQd6eLLzRoA/keMtkq
3gK//FHilfAjOMQ1/j6ylpuRp3mOwPaPzSqKhpufcTryATJTVPzvZfzJxGAbwZh09cnRfnQdszUT
2L2FUOcDNHLrQ13UndElan3YB8F5D+Eb5Khw/zAVcXNDOWBv93xkfcQqq/9VE6mI2DZ7jxWuLw15
cxGxtk4klecya+sSnEtjHzZBWBvAWgOkNjnr2DDJzWbazNV896ChxIyguSXBNEITX4fmW2brb0=" wsu:Id="SC-4b03426b-5cc1-46f1-8868-dca8eb2ebe2a"
xmlns:wssell="http://docs.oasis-open.org/wss/oasis-wss-wssecurity-secext-1.1.xsd"/>
  <ds:Signature Id="SIG-b823a000-3cf5-4c90-8af2-387eeb6fd4a2" xmlns:ds="http://www.w3.org/2000/09/xmldsig#">
    <ds:SignedInfo>
      <ds:CanonicalizationMethod Algorithm="http://www.w3.org/2001/10/xml-exc-c14n#">
        <ec:InclusiveNamespaces PrefixList="SOAP-ENV" xmlns:ec="http://www.w3.org/2001/10/xml-exc-c14n#" />
      </ds:CanonicalizationMethod>
      <ds:SignatureMethod Algorithm="http://www.w3.org/2001/04/xmldsig-more#rsa-sha384" />
      <ds:Reference URI="#id-e5c8879a-fd18-4fdd-907d-a5a42e312809">
        <ds:Transforms>
          <ds:Transform Algorithm="http://www.w3.org/2001/10/xml-exc-c14n#" />
        </ds:Transforms>
        <ds:DigestMethod Algorithm="http://www.w3.org/2001/04/xmldsig-more#sha384" />
        <ds:DigestValue>8Evp0cfHfBnlL2q9nebFVN4DB0p9GcP9MjHa0fr+M5tdKG3PujGKbCV0U0cGoyll</ds:DigestValue>
      </ds:Reference>
      <ds:Reference URI="#TS-219b1df9-0031-42d1-8e3b-c329460c0018">
        <ds:Transforms>
          <ds:Transform Algorithm="http://www.w3.org/2001/10/xml-exc-c14n#">
            <ec:InclusiveNamespaces PrefixList="wsse SOAP-ENV" xmlns:ec="http://www.w3.org/2001/10/xml-exc-c14n#" />
          </ds:Transform>
        </ds:Transforms>
        <ds:DigestMethod Algorithm="http://www.w3.org/2001/04/xmldsig-more#sha384" />
        <ds:DigestValue>8VprHYQJQ6PVTFAsoFIPaPrxbSBDsweYrVMNwUPfI8+LkzuzfZsXJPONT+3WmHnY</ds:DigestValue>
      </ds:Reference>
      <ds:Reference URI="#SC-4b03426b-5cc1-46f1-8868-dca8eb2ebe2a">
        <ds:Transforms>
          <ds:Transform Algorithm="http://www.w3.org/2001/10/xml-exc-c14n#">
            <ec:InclusiveNamespaces PrefixList="wsse SOAP-ENV" xmlns:ec="http://www.w3.org/2001/10/xml-exc-c14n#" />
          </ds:Transform>
        </ds:Transforms>
        <ds:DigestMethod Algorithm="http://www.w3.org/2001/04/xmldsig-more#sha384" />
        <ds:DigestValue>Z4QIR3lKAZPKtJFLP+M3fL2j2SraGeYt2tBYelCREVqMasV0cwL3riTY478UU+hC</ds:DigestValue>
      </ds:Reference>
    </ds:SignedInfo>
  </ds:Signature>

```

```

        </ds:SignedInfo>
        <ds:SignatureValue>Sc/oGR400wGAKPXaNwOJ4261M2D+SEaZmQkdYmDp0bXGuCgeph+zS7tHDl9rDKKSeWDA0mk9kb6
P03H2T8qyndOtY9IOHG3+9mkFCcMUaWsoxFtTVEZ6jmqB0fozlskCvzKl7Qh5OvC2FKb7IbbPK6n
yJqpsYZVYRLBCi46Yg+R2W2dPj8MbQmFyZMqgneb4u8TsrS8naoZTViT5iCARF0jWS2oKOTsHVyd
wY7ZtQFZPjPzi/6iYzut0Dz1Ql2/1NZ6x4MQLCaoD0yEgMcpJULsDde2/Z6S+SKvIHc8mYLXVuwH +LREArektSogfIPP6DubmymBa+4cBFnJuQ+gMg==</ds:SignatureValue>
        <ds:KeyInfo Id="KI-bc193719-db9b-4a04-b13c-2267ddd0a116">
            <wsse:SecurityTokenReference wsu:Id="STR-d8287dab-9d2d-460d-9a75-535acadf4831">
                <wsse:Reference URI="#X509-1e2e3565-5ed7-43c3-9bc2-89a3314c758c" ValueType="http://docs.oasis-open.org/wss/2004/01/oasis-
200401-wss-x509-token-profile-1.0#X509v3"/>
            </wsse:SecurityTokenReference>
        </ds:KeyInfo>
    </ds:Signature>
</wsse:Security>
</SOAP-ENV:Header>
<SOAP-ENV:Body wsu:Id="id-e5c8879a-fd18-4fdd-907d-a5a42e312809" xmlns:wsu="http://docs.oasis-open.org/wss/2004/01/oasis-200401-wss-
wssecurity-utility-1.0.xsd">
    <ns2:erkezesiAdatokBekuldeseResponse xmlns:ns2="http://vizainfo.hu/thf/v1">
        <ns2:valaszAdat>
            <ns2:sikerBefogadas>true</ns2:sikerBefogadas>
            <ns2:fogadasAzonosito>98ffa1cd-220c-4506-ace7-f84258a60a4b</ns2:fogadasAzonosito>
            <ns2:fogadasIdeje>2021-02-08T12:55:30.812+01:00</ns2:fogadasIdeje>
            <ns2:hibaLista>
                <ns2:erkezesAzonosito>4fd72aa1-e107-46af-9e90-87ce0d570b0f</ns2:erkezesAzonosito>
                <ns2:hibaKod>OK</ns2:hibaKod>
            </ns2:hibaLista>
        </ns2:valaszAdat>
    </ns2:erkezesiAdatokBekuldeseResponse>
</SOAP-ENV:Body>
</SOAP-ENV:Envelope>

```

### 3.9.4. Sending data of departing guests

#### Request:

```

<soapenv:Envelope xmlns:soapenv="http://schemas.xmlsoap.org/soap/envelope/" xmlns:v1="http://vizainfo.hu/thf/v1">
    <soapenv:Header>
        <wsse:Security xmlns:wsse="http://docs.oasis-open.org/wss/2004/01/oasis-200401-wss-wssecurity-secext-1.0.xsd"
xmlns:wsu="http://docs.oasis-open.org/wss/2004/01/oasis-200401-wss-wssecurity-utility-1.0.xsd">
            <wsu:Timestamp wsu:Id="TS-EA5E546CCB3DD069EA1612787883776570">
                <wsu:Created>2021-02-08T12:38:03.775Z</wsu:Created>
                <wsu:Expires>2021-02-09T16:24:43.775Z</wsu:Expires>
            </wsu:Timestamp>
            <wsse:BinarySecurityToken EncodingType="http://docs.oasis-open.org/wss/2004/01/oasis-200401-wss-soap-message-security-
1.0#Base64Binary" ValueType="http://docs.oasis-open.org/wss/2004/01/oasis-200401-wss-x509-token-profile-1.0#X509PKIPathv1" wsu:Id="X509-
EA5E546CCB3DD069EA1612787883749565">***BinarySecurityToken***</wsse:BinarySecurityToken>
            <ds:Signature Id="SIG-EA5E546CCB3DD069EA1612787883751569" xmlns:ds="http://www.w3.org/2000/09/xmldsig#">
                <ds:SignedInfo>
                    <ds:CanonicalizationMethod Algorithm="http://www.w3.org/2001/10/xml-exc-c14n#">

```

```

    <ec:InclusiveNamespaces PrefixList="soapenv v1" xmlns:ec="http://www.w3.org/2001/10/xml-exc-c14n#" />
  </ds:CanonicalizationMethod>
  <ds:SignatureMethod Algorithm="http://www.w3.org/2001/04/xmldsig-more#rsa-sha384" />
  <ds:Reference URI="#id-EA5E546CCB3DD069EA1612787883750568">
    <ds:Transforms>
      <ds:Transform Algorithm="http://www.w3.org/2001/10/xml-exc-c14n#">
        <ec:InclusiveNamespaces PrefixList="v1" xmlns:ec="http://www.w3.org/2001/10/xml-exc-c14n#" />
      </ds:Transform>
    </ds:Transforms>
    <ds:DigestMethod Algorithm="http://www.w3.org/2000/09/xmldsig#sha1" />
    <ds:DigestValue>ZzODf1cwg18uTWA/yPPwYdn4rY=</ds:DigestValue>
  </ds:Reference>
</ds:SignedInfo>
  <ds:SignatureValue>OeCpYgR4ZZ/rZIUkC2FDe1TyVhKcJdn6vF0Q0xeme0JSs16DNB9WME8CV+5Mu4BZu+pe5DftOrKO&#13;
3IaQAmdX19UWpYMJ/EhUDwONLtiGuKLPgPKBXP9H9P/EtjH9jQd0X/IeXUrb1U341v9M/OCnyoyp&#13;
gU91z5k2DNcOu06wnNfg2G8aRaxadwMBfvWGT07PDpr0oyT4eojpiVObJLlUW5gid9mJu9FIy5th&#13;
RviHrjkwSPnqEx5NyTT1F5EMQHU+zJqW/UoSKDrkH8SnSMAlFd3ztCw3Zt0+MjTQvaigd1jBzFK+&#13;
+kaaiddTY16Xdvgv1PFRLroSNbE1qUtNiefsiDBkFVqcUm2TEQBcJ8jwXnCnOhaXKg1hC801HisL&#13;
gINZuWjMreVcM46Ozb+HOQHx2q7ALN/Sxaxd/1059TKWvvtZJmCMYJLm01xuIN4JyuxDFfnKNo90&#13;
Ash94iZYGL9u3cW64cSgBBcQXCFIaagilqFedvqBCmtvhVeEX33upoBx/GlrDWIwVNUSYCIxM1j2&#13;
LilIkypqSZEObml41wD9fwpQCDNpYlQ5BGLzyc5CtAz0DUinfo0c+CFb7KHfBcY2L3RBL24SAWYC&#13;
g/vpvJxKPC25qt8eMnfClTCTHu0Xs0HXDtlezTqEr0kiBaCbcXZz+j99t0BU7iURtUC9Xjr8ENI=</ds:SignatureValue>
  <ds:KeyInfo Id="KI-EA5E546CCB3DD069EA1612787883750568">
    <wsse:SecurityTokenReference wsse11:TokenType="http://docs.oasis-open.org/wss/2004/01/oasis-200401-wss-x509-token-profile-
1.0#X509PKIPathv1" wsu:Id="STR-EA5E546CCB3DD069EA1612787883750567" xmlns:wsse11="http://docs.oasis-open.org/wss/oasis-wss-wssecurity-secext-
1.1.xsd">
      <wsse:Reference URI="#X509-EA5E546CCB3DD069EA1612787883749565" ValueType="http://docs.oasis-open.org/wss/2004/01/oasis-
200401-wss-x509-token-profile-1.0#X509PKIPathv1" />
    </wsse:SecurityTokenReference>
  </ds:KeyInfo>
</ds:Signature>
</wss:Security>
</soapenv:Header>
  <soapenv:Body wsu:Id="id-EA5E546CCB3DD069EA1612787883750568" xmlns:wsu="http://docs.oasis-open.org/wss/2004/01/oasis-200401-wss-wssecurity-
utility-1.0.xsd">
    <v1:tavozasiAdatokBekuldeseRequest>
      <v1:keresAdat>
        <v1:uzenetAzonosito>5ae6d914-6a06-11eb-9439-0242ac130002</v1:uzenetAzonosito>
        <v1:szallashely>
          <v1:adatszolgaltatasiAzonosito>DVQTD1KW</v1:adatszolgaltatasiAzonosito>
          <v1:szallasNev>Szallas</v1:szallasNev>
          <v1:szallashelySzolgaltatoAdoszam>48919819-8-89</v1:szallashelySzolgaltatoAdoszam>
          <v1:szallashelySzolgaltatoNev>Szolgaltato</v1:szallashelySzolgaltatoNev>
        </v1:szallashely>
        <v1:bejelentesIdopontja>2021-02-08T11:12:13.632+01:00</v1:bejelentesIdopontja>
        <v1:pmsValidaciosUzenet>
          <v1:ellenorzoString>DVQTD1KW|4fd72aa1-e107-46af-9e90-87ce0d570b0f|2021-02-08T11:12:13.632+01:00</v1:ellenorzoString>
          <v1:alairoTanusitvany>***PMS_NTAK_SIGNING_CERTIFICATE***</v1:alairoTanusitvany>
        </v1:pmsValidaciosUzenet>
      </v1:keresAdat>
    </v1:tavozasiAdatokBekuldeseRequest>
  </soapenv:Body>
</soapenv:Envelope>
</v1:alairas>O2TnxqPdU+pvffIRKJwP+ZvTWeARDJCDg4vBGPoT8q8Bums/eTT+CxhqOu3Pd8+OCR4okN/r2/o3v1UmlcHEIpOHvg5Dq4taoOEBIXqk6BX5UbB/UhTjCKWN4nUUABWTv8gov

```



```

9G8VZtkuOObICREOUkTkSFEffsJpom680QwdpEjk4/BJJfG3b3mxHSVBWew8YKAGATvvZjErtdd7qJ3sfnJW6QWR20xV4OmwbGotTLxTxv89K5aXQpiSpSnDtVmsTmi817FF0BUEV1Wa1CZLK
qCEqVRvFSinwr1/V6uA5o4i4z8fdzLSWFcmfJ049k8KxqgVdp8Op7vU74tXVZRUWtZg+tQQtMrW0algI+CnRr0Q7HoiSfoY4FibiQ20/3DoL3YmtGahPXmUaoH+DtWlmsdAusNvbWkGbyoMJ
V0aBIfv9alkxXkbZY+2d9jV9VIiS2M1HEkcHey1VhnlawppIgtUByShfdRx7HeKXYiyFt8Ton6liDPPX5CHIKtEnquU6KmX5wubJtvfvYt1/VqayMC24JolFaEXBQp9WN5RnzSmv61oJ5QmfP
I0GNMSFvrvymi tpcCk93e7Qtb+LJix4CAoblFvBEFPwihK6+iVDrhWRT5W4iP0E+oivynMbLKaXg/MWQ8egzLPcywnKRL4y4WwzTE+Hut54uTLZzge=</v1:alairas>
  </v1:pmsValidaciosUzenet>
  <!--1 to 10 repetitions:-->
  <v1:tavozoVendeg>
    <v1:erkezesAzonosito>4fd72aa1-e107-46af-9e90-87ce0d570b0f</v1:erkezesAzonosito>
    <v1:tavozasIdeje>2021-02-08T11:02:03.113+01:00</v1:tavozasIdeje>
  </v1:tavozoVendeg>
</v1:keresAdat>
</v1:tavozasiAdatokBekuldeseRequest>
</soapenv:Body>
</soapenv:Envelope>

```

## Response:

```

<SOAP-ENV:Envelope xmlns:SOAP-ENV="http://schemas.xmlsoap.org/soap/envelope/">
  <SOAP-ENV:Header>
    <wsse:Security xmlns:wsse="http://docs.oasis-open.org/wss/2004/01/oasis-200401-wss-wssecurity-secext-1.0.xsd"
xmlns:wsu="http://docs.oasis-open.org/wss/2004/01/oasis-200401-wss-wssecurity-utility-1.0.xsd">
      <wsse:BinarySecurityToken EncodingType="http://docs.oasis-open.org/wss/2004/01/oasis-200401-wss-soap-message-security-
1.0#Base64Binary" ValueType="http://docs.oasis-open.org/wss/2004/01/oasis-200401-wss-x509-token-profile-1.0#X509v3" wsu:Id="X509-ef33e538-a131-
40b5-9992-4fc57ccb8078">***BinarySecurityToken***</wsse:BinarySecurityToken>
      <wsu:Timestamp wsu:Id="TS-2ef76e77-4169-43e7-976b-19fead50395f">
        <wsu:Created>2021-02-08T12:38:04.891Z</wsu:Created>
        <wsu:Expires>2021-02-08T12:43:04.891Z</wsu:Expires>
      </wsu:Timestamp>
      <wsse11:SignatureConfirmation Value="OeCpYgR4ZZ/rZIUKC2FDe1TyVHkCjdn6vF0Q0xeme0JSs16DNB9WME8CV+5Mu4BZu+pe5DftOrKO
3IaQAmDX19UWpYMJ/EhUDwONLtiGuKLPgPKBXP9H9P/EtjH9jQd0X/IeXUrb1U341v9M/OCnyoyp
gU9lZ5k2DNcOu06wnNfg2G8aRaxadwMBfvWGTo7PDpr0oyT4eojpiV0bJLJUW5gid9mJu9FIy5th
RviHrjkwSPnqEx5NyTT1F5EMQHU+zJqW/UoSKDrkh8SnSMALFd3ztCw3Zt0+MjTQvaigd1jBzFK+
+kaaiddTY16Xdvgv1PFRlroSNbElqUtNiefsiDBkFVqcUm2TEQBCJ8jwXnCbOhaXKg1hC801HisL
gINZuWjMreVcM46Ozb+HOQHx2q7ALN/Sxaxd/1059TKWvvtZJmCMYJLm01xuIN4JyuxDFfnKNo90
Ash94iZYGL9u3cW64cSgBBcQXCFIaagilqFedvqBCMtvhVeEX33upoBx/GlrDWIwVNUSYCIxM1j2
LilIkyqpSZE0bml41wD9fwpQCDNpYlQ5BGlzyc5CtAz0DUinfo0c+CFb7KHfBcY2L3RBL24SAWYC
g/vpvJxKpC25qt8eMnfC1TCTHu0Xs0HXDtlezTqErOkibaCbCzZz+j99t0BU7iURtUC9Xjr8ENI=" wsu:Id="SC-9df580c9-c7e2-4f6a-8ccb-a750e9398b0a"
xmlns:wss11="http://docs.oasis-open.org/wss/oasis-wss-wssecurity-secext-1.1.xsd"/>
      <ds:Signature Id="SIG-d48a8fe1-9922-461a-blbb-8008297b86d4" xmlns:ds="http://www.w3.org/2000/09/xmldsig#">
        <ds:SignedInfo>
          <ds:CanonicalizationMethod Algorithm="http://www.w3.org/2001/10/xml-exc-c14n#">
            <ec:InclusiveNamespaces PrefixList="SOAP-ENV" xmlns:ec="http://www.w3.org/2001/10/xml-exc-c14n#" />
          </ds:CanonicalizationMethod>
          <ds:SignatureMethod Algorithm="http://www.w3.org/2001/04/xmldsig-more#rsa-sha384"/>
          <ds:Reference URI="#id-de4acb28-c6c5-4b78-bec6-b0218944e3d9">
            <ds:Transforms>
              <ds:Transform Algorithm="http://www.w3.org/2001/10/xml-exc-c14n#" />
            </ds:Transforms>
          <ds:DigestMethod Algorithm="http://www.w3.org/2001/04/xmldsig-more#sha384"/>
          <ds:DigestValue>AQ41SEpXo8eJmjwDF9m9kNwEsFx7HPV5JdPEjjiyMRtFwVpk9lSFijZniL0crzxk</ds:DigestValue>

```

```

</ds:Reference>
<ds:Reference URI="#TS-2ef76e77-4169-43e7-976b-19fead50395f">
  <ds:Transforms>
    <ds:Transform Algorithm="http://www.w3.org/2001/10/xml-exc-c14n#">
      <ec:InclusiveNamespaces PrefixList="wsse SOAP-ENV" xmlns:ec="http://www.w3.org/2001/10/xml-exc-c14n#"/>
    </ds:Transform>
  </ds:Transforms>
  <ds:DigestMethod Algorithm="http://www.w3.org/2001/04/xmldsig-more#sha384"/>
  <ds:DigestValue>XIK4/7GQ665TIqbg/7b0vWMDqUc+xElaetYjJHZvumKdnBRCFXzTjMOV8sgvJx8V</ds:DigestValue>
</ds:Reference>
<ds:Reference URI="#SC-9df580c9-c7e2-4f6a-8ccb-a750e9398b0a">
  <ds:Transforms>
    <ds:Transform Algorithm="http://www.w3.org/2001/10/xml-exc-c14n#">
      <ec:InclusiveNamespaces PrefixList="wsse SOAP-ENV" xmlns:ec="http://www.w3.org/2001/10/xml-exc-c14n#"/>
    </ds:Transform>
  </ds:Transforms>
  <ds:DigestMethod Algorithm="http://www.w3.org/2001/04/xmldsig-more#sha384"/>
  <ds:DigestValue>5jVmk3pK2TypW8tDetzSWGdgO1QsphPUpp3L1xlN5IryWgQUplBpJ40yzzqWhy05</ds:DigestValue>
</ds:Reference>
</ds:SignedInfo>
<ds:SignatureValue>j+nhQ7L3gU1zYyiEiFs/45XOx6rMsbbAR4ewo5dkBbyvo4wcF08qw7xE2pH5fNBRdzQU3cB2ESrZ
6AsAGVKDjHExWtXRF92aUqYdEpK5OCrIfUbo7tzyMV1tmPvFGB9fWk8+4WWgY009PetSg2oN6I1
ujcC2Wfty0VESFTUH6W+Lp4toqi9pYx70j2tL12K4XXUBrDalqVun3XK+Rcv/qiLwCEN3CuIYXBy
kBa9W0Xi7vhrWGgQ9EwL9WGVjv/cVAyA6fb4sKee9fuqkJaXgOxuv7jnxhjCvlpFz4BBaT1TUFwh Z/JVPZYJPqoADVj9IVVDCz9DZZlclls7PFnhhQ==</ds:SignatureValue>
  <ds:KeyInfo Id="KI-cdd6d7f1-55a8-4c72-80e3-23b6473021d5">
    <wsse:SecurityTokenReference wsu:Id="STR-aaf1f40e-9fa8-444c-88cb-97e52afb108a">
      <wsse:Reference URI="#X509-ef33e538-a131-40b5-9992-4fc57ccb8078" ValueType="http://docs.oasis-open.org/wss/2004/01/oasis-
200401-wss-x509-token-profile-1.0#X509v3"/>
    </wsse:SecurityTokenReference>
  </ds:KeyInfo>
</ds:Signature>
</wsse:Security>
</SOAP-ENV:Header>
<SOAP-ENV:Body wsu:Id="id-de4acb28-c6c5-4b78-bec6-b0218944e3d9" xmlns:wsu="http://docs.oasis-open.org/wss/2004/01/oasis-200401-wss-
wssecurity-utility-1.0.xsd">
  <ns2:tavozasiAdatokBekuldeseResponse xmlns:ns2="http://vizainfo.hu/thf/v1">
    <ns2:valaszAdat>
      <ns2:sikerBefogadas>true</ns2:sikerBefogadas>
      <ns2:fogadasAzonosito>09d930c1-23dd-4794-9dea-da41712bd7db</ns2:fogadasAzonosito>
      <ns2:fogadasIdeje>2021-02-08T13:38:04.870+01:00</ns2:fogadasIdeje>
      <ns2:hibalista>
        <ns2:erkezesAzonosito>4fd72aa1-e107-46af-9e90-87ce0d570b0f</ns2:erkezesAzonosito>
        <ns2:hibakod>OK</ns2:hibakod>
      </ns2:hibalista>
    </ns2:valaszAdat>
  </ns2:tavozasiAdatokBekuldeseResponse>
</SOAP-ENV:Body>
</SOAP-ENV:Envelope>

```



### 3.10. WSDL

```
<?xml version="1.0" encoding="UTF-8" standalone="no"?><wSDL:definitions xmlns:wSDL="http://schemas.xmlsoap.org/wSDL/"
xmlns:sch="http://vizainfo.hu/thf/v1" xmlns:soap="http://schemas.xmlsoap.org/wSDL/soap/" xmlns:tns="http://vizainfo.hu/thf/v1"
targetNamespace="http://vizainfo.hu/thf/v1">
  <wSDL:types>
    <xs:schema xmlns="http://vizainfo.hu/thf/v1" xmlns:xs="http://www.w3.org/2001/XMLSchema" elementFormDefault="qualified"
targetNamespace="http://vizainfo.hu/thf/v1">

      <!-- PMS THF ***** -->
      <xs:element name="erkezesiAdatokBekuldeseRequest">
        <xs:complexType>
          <xs:sequence>
            <xs:element name="keresAdat" type="ErkezesiAdatokType"/>
          </xs:sequence>
        </xs:complexType>
      </xs:element>

      <xs:complexType name="ErkezesiAdatokType">
        <xs:complexContent>
          <xs:extension base="BekuldesFejlecType">
            <xs:sequence>
              <xs:element maxOccurs="10" name="erkezoVendeg" type="ErkezoVendegType">
                <xs:annotation>
                  <xs:documentation>
                    Containing data of at least 1 but not more than 10 guests
                    (see ErkezoVendegType).
                  </xs:documentation>
                </xs:annotation>
              </xs:element>
            </xs:sequence>
          </xs:extension>
        </xs:complexContent>
      </xs:complexType>

      <xs:element name="erkezesiAdatokBekuldeseResponse">
        <xs:complexType>
          <xs:sequence>
            <xs:element name="valaszAdat" type="BekuldesValaszType"/>
          </xs:sequence>
        </xs:complexType>
      </xs:element>

      <!-- ***** -->
      <xs:element name="tavozasiAdatokBekuldeseRequest">
        <xs:complexType>
          <xs:sequence>
```

```

                <xs:element name="keresAdat" type="TavozasiAdatokType"/>
            </xs:sequence>
        </xs:complexType>
    </xs:element>

<xs:complexType name="TavozasiAdatokType">
    <xs:complexContent>
        <xs:extension base="BekuldesFejlecType">
            <xs:sequence>
                <xs:element maxOccurs="10" name="tavozoVendeg" type="TavozoVendegType">
                    <xs:annotation>
                        <xs:documentation>
                            Containing data of at least 1 but not more than 10 guests
                            (see ErkezoVendegType).
                        </xs:documentation>
                    </xs:annotation>
                </xs:element>
            </xs:sequence>
        </xs:extension>
    </xs:complexContent>
</xs:complexType>

<xs:element name="tavozasiAdatokBekuldeseResponse">
    <xs:complexType>
        <xs:sequence>
            <xs:element name="valaszAdat" type="BekuldesValaszType"/>
        </xs:sequence>
    </xs:complexType>
</xs:element>

<!-- ***** -->

<xs:element name="allapotLekerdezesRequest">
    <xs:complexType>
        <xs:sequence>
        </xs:sequence>
    </xs:complexType>
</xs:element>

<xs:element name="allapotLekerdezesResponse">
    <xs:complexType>
        <xs:sequence>
            <xs:element name="szoftverVerzio" nillable="true" type="xs:string">
                <xs:annotation>
                    <xs:documentation>
                        Version number of software sending data to host
                    </xs:documentation>
                </xs:annotation>
            </xs:element>
        </xs:sequence>
    </xs:complexType>
</xs:element>

```

```

    <xs:element name="allapotKod" type="xs:string">
      <xs:annotation>
        <xs:documentation>
          Encoded description of the THF status.
        </xs:documentation>
      </xs:annotation>
    </xs:element>
    <xs:element name="bekuldetlenUzenetekSzama" type="xs:integer">
      <xs:annotation>
        <xs:documentation>
          The number of arrival and departure data accepted by the THF but not successfully
          transmitted to the Storage Unit. It does not include the number of
          faulty arrival and departure data already rejected.
        </xs:documentation>
      </xs:annotation>
    </xs:element>
    <xs:element name="hibasUzenetekSzama" type="xs:integer">
      <xs:annotation>
        <xs:documentation>
          The number of arrival and departure data accepted by the THF but rejected
          by the Storage Unit upon transmission.
        </xs:documentation>
      </xs:annotation>
    </xs:element>
    <xs:element name="idoPecset" type="xs:dateTime">
      <xs:annotation>
        <xs:documentation>
          Query time stamp.
        </xs:documentation>
      </xs:annotation>
    </xs:element>
  </xs:sequence>
</xs:complexType>
</xs:element>

<!-- ***** -->

<xs:element name="bekuldetlenAdatListaRequest">
  <xs:complexType>
    <xs:sequence>
      <xs:element name="bekuldetlenAdatTipus" type="BekuldetlenAdatListaType">
        <xs:annotation>
          <xs:documentation>
            It shows whether the caller is querying for data not transmitted yet (NEMBEKULDOTT)
            or those rejected upon transmission (HIBAS).
          </xs:documentation>
        </xs:annotation>
      </xs:element>
    </xs:sequence>
  </xs:complexType>

```

```

</xs:element>

<xs:element name="bekuldetlenAdatListaResponse">
  <xs:complexType>
    <xs:sequence>
      <xs:element name="eredmenyKod" type="xs:string">
        <xs:annotation>
          <xs:documentation>
            Its value is OK if the list of data not transmitted yet was successfully queried.
            In other cases it contains an error code. (Exxxx)
          </xs:documentation>
        </xs:annotation>
      </xs:element>
      <xs:element maxOccurs="10000" minOccurs="0" name="bekuldetlenAdat" type="BekuldetlenAdatType">
        <xs:annotation>
          <xs:documentation>
            List of data not transmitted yet or rejected upon transmission.
          </xs:documentation>
        </xs:annotation>
      </xs:element>
    </xs:sequence>
  </xs:complexType>
</xs:element>

<!-- ***** -->
<!-- ***** -->

<xs:complexType abstract="true" name="BekuldesFejlecType">
  <xs:sequence>
    <xs:element name="uzenetAzonosito" type="UUIDType">
      <xs:annotation>
        <xs:documentation>
          Unique UUID
          -type message identifier generated by sending software (see UUIDType).
        </xs:documentation>
      </xs:annotation>
    </xs:element>
    <xs:element name="szallashely" type="SzallasHelyType">
      <xs:annotation>
        <xs:documentation>
          It contains the data of the sending accommodation provider.
        </xs:documentation>
      </xs:annotation>
    </xs:element>
    <xs:element name="bejelentesIdopontja" type="xs:dateTime">
      <xs:annotation>
        <xs:documentation>
          Date of data provision. ISO 8601 date and

```

```

        time format, a string of characters complete
        with
        time zone.
    </xs:documentation>
</xs:annotation>
</xs:element>
<xs:element name="pmsValidaciosUzenet" type="ValidaciosUzenetType">
    <xs:annotation>
        <xs:documentation>
            Field containing the
            ..... message segment generated by the PMS software used by the accommodation provider for validation purposes and the
            public signature key used for its verification.

            The string to be signed is generated using the following elements:
            - NTAK data provision ID (adatszolgaltatasiAzonosito field)
            - unique IDs guests' arrivals (VendegType elements' erkezesAzonosito fields)
            - date of notification (bejelentesIdopontja)
            These elements are combined by using the '|' (pipe) tab characters.
            Example:
            Let the NTAK data provision ID be teszt123 and the guest arrival IDs generated by the accommodation unit's PMS software
            ..... be:
            - d3d8d17b-e0e4-417a-94b6-13e79d2a06d0
            - cd9604b9-45d2-40db-97c9-87ff889c9d9d
            Let the date and time of notification be 10:52:23 on 19.01.2021 Hungarian time.
            The corresponding ISO 8601 standard date and time format:
            2021-01-19T10:52:23+01:00
            Accordingly, the expected verification string:
            teszt123|d3d8d17b-e0e4-417a-94b6-13e79d2a06d0|cd9604b9-45d2-40db-97c9-87ff889c9d9d|2021-01-19T10:52:23+01:00
        </xs:documentation>
    </xs:annotation>
</xs:element>
</xs:sequence>
</xs:complexType>

<xs:complexType name="BekuldesValaszType">
    <xs:sequence>
        <xs:element name="sikereresBefogadas" type="xs:boolean">
            <xs:annotation>
                <xs:documentation>
                    The success of data transmission and the
                    verification of the data transmitted is proven by its value being TRUE.
                    A detailed list of errors is returned after a failed transmission attempt.
                </xs:documentation>
            </xs:annotation>
        </xs:element>
        <xs:element name="fogadasAzonosito" type="UUIDType">
            <xs:annotation>
                <xs:documentation>
                    Unique UUID
                    -type message identifier
                </xs:documentation>
            </xs:annotation>
        </xs:element>
    </xs:sequence>
</xs:complexType>

```



generated by the receiving storage unit (see UUIDType) in the case of successful acceptance. It must be retained by the PMS, associated

```

    with the arrival data.
  </xs:documentation>
</xs:annotation>
</xs:element>
<xs:element name="fogadasIdeje" type="xs:dateTime">
  <xs:annotation>
    <xs:documentation>
      Time stamp generated by the recipient storage unit concerning reception.
      ISO 8601 date and time format, a string of characters complete
      with time zone.
    </xs:documentation>
  </xs:annotation>
</xs:element>
<xs:element maxOccurs="10" name="hibaLista" type="EredmenyType">
  <xs:annotation>
    <xs:documentation>
      It lists error codes
      and error texts relating to the transmitted guest arrival IDs. If piece of a guest data meets
      all requirements, the value of the code is OK, and the error text is blank.
      If a data field does not meet all requirements, the code is an error code
      (Exxxx) and the text contains the explanation of the error code.
      In the case of multiple errors the error codes and error texts are
      returned separated by colons. The error code shows the problem or data error
      because of which the guest data were not accepted.
    </xs:documentation>
  </xs:annotation>
</xs:element>
</xs:sequence>
</xs:complexType>
<xs:complexType name="EredmenyType">
  <xs:sequence>
    <xs:element name="erkezesAzonosito" type="UUIDType">
      <xs:annotation>
        <xs:documentation>
          The unique identifier of the arrival of a given guest
          to whom the error code and text applies.
        </xs:documentation>
      </xs:annotation>
    </xs:element>
    <xs:element name="hibaKod" type="xs:string">
      <xs:annotation>
        <xs:documentation>
          If the piece of a guest data concerned meets all requirements, the
          value of the code is OK, otherwise it shows an
          error code (Exxxx). Multiple error codes are separated
          by semicolons.
        </xs:documentation>
      </xs:annotation>
    </xs:element>
  </xs:sequence>
</xs:complexType>

```

```

        </xs:annotation>
    </xs:element>
    <xs:element name="hibaSzoveg" type="xs:string">
        <xs:annotation>
            <xs:documentation>
                If the piece of a guest data concerned meets all requirements,
                the value of the error text is blank, otherwise it contains the
                explanation associated with the error code. Multiple errors
                are separated by semicolons.
            </xs:documentation>
        </xs:annotation>
    </xs:element>
</xs:sequence>
</xs:complexType>

<xs:complexType name="ErkezoVendegType">
    <xs:sequence>
        <xs:element name="erkezesAzonosito" type="UUIDType">
            <xs:annotation>
                <xs:documentation>
                    The unique ID of the given guest's arrival. The same value
                    has to be transmitted upon the
                    arrival and departure of the given guest to make it possible to
                    connect the guest's departure to their arrival (see UUIDType).
                </xs:documentation>
            </xs:annotation>
        </xs:element>
        <xs:element name="erkezesIdeje" type="xs:dateTime">
            <xs:annotation>
                <xs:documentation>
                    The exact date and time of checking in. ISO 8601
                    date and time
                    format, a string of characters complete
                    with time zone.
                </xs:documentation>
            </xs:annotation>
        </xs:element>
        <xs:element name="tavozasVarhatoDatuma" type="xs:date">
            <xs:annotation>
                <xs:documentation>
                    The expected date of departure as booked,
                    in the form of a string of characters in YYYY-MM-DD format, e.g. 2020-07-01.
                </xs:documentation>
            </xs:annotation>
        </xs:element>

        <xs:element minOccurs="0" name="manualisanRogzitettAdat" type="SzemelyAdatType">
            <xs:annotation>
                <xs:documentation>
                    Manually recorded personal data.
                </xs:documentation>
            </xs:annotation>
        </xs:element>
    </xs:sequence>
</xs:complexType>

```

```

        </xs:documentation>
    </xs:annotation>
</xs:element>

<xs:element minOccurs="0" name="okmanybolBeolvasottAdat" type="SzemelyAdatType">
    <xs:annotation>
        <xs:documentation>
            Personal data read from document.
        </xs:documentation>
    </xs:annotation>
</xs:element>

<xs:element name="vizumEngedelySzam" nillable="true" type="xs:string">
    <xs:annotation>
        <xs:documentation>
            Number of the visa or residence permit of the user
            coming from
            a third country.
        </xs:documentation>
    </xs:annotation>
</xs:element>

<xs:element name="beutazasDatuma" nillable="true" type="xs:date">
    <xs:annotation>
        <xs:documentation>
            The day on which the third
            country user
            entered Hungary.
        </xs:documentation>
    </xs:annotation>
</xs:element>

<xs:element name="beutazasHelye" nillable="true" type="xs:string">
    <xs:annotation>
        <xs:documentation>
            The location where the third
            country user entered
            Hungary.
        </xs:documentation>
    </xs:annotation>
</xs:element>

</xs:sequence>
</xs:complexType>

<xs:complexType name="SzemelyAdatType">
    <xs:sequence>

        <xs:element name="csaladnev" nillable="true" type="xs:string">
            <xs:annotation>
                <xs:documentation>
                    Family name (surname) of the user.

```

```

        </xs:documentation>
    </xs:annotation>
</xs:element>
<xs:element name="utonev" nillable="true" type="xs:string">
    <xs:annotation>
        <xs:documentation>
            Given name (first name) of the user.
        </xs:documentation>
    </xs:annotation>
</xs:element>
<xs:element name="szuletesiCsaladnev" nillable="true" type="xs:string">
    <xs:annotation>
        <xs:documentation>
            Family name (surname) at birth of the user.
        </xs:documentation>
    </xs:annotation>
</xs:element>
<xs:element name="szuletesiUtonev" nillable="true" type="xs:string">
    <xs:annotation>
        <xs:documentation>
            Given name (first name) at birth of the user.
        </xs:documentation>
    </xs:annotation>
</xs:element>
<xs:element name="szuletesiDatum" nillable="true" type="xs:date">
    <xs:annotation>
        <xs:documentation>
            Date of birth of the user.
        </xs:documentation>
    </xs:annotation>
</xs:element>
<xs:element name="szuletesiHely" nillable="true" type="xs:string">
    <xs:annotation>
        <xs:documentation>
            Place of birth of the user.
        </xs:documentation>
    </xs:annotation>
</xs:element>
<xs:element name="anyjaCsaladnev" nillable="true" type="xs:string">
    <xs:annotation>
        <xs:documentation>
            Family name (surname) at birth of the mother of the user.
        </xs:documentation>
    </xs:annotation>
</xs:element>
<xs:element name="anyjaUtonev" nillable="true" type="xs:string">
    <xs:annotation>
        <xs:documentation>
            Given name (first name) at birth of the mother of the user.
        </xs:documentation>
    </xs:annotation>
</xs:element>

```

```

        </xs:annotation>
    </xs:element>
    <xs:element name="allampolgarsagKod" nillable="true" type="AllampolgarsagKodType">
        <xs:annotation>
            <xs:documentation>
                Code of the user
                (2-character country code according to ISO 3166-1
                alpha-2), see
                AllampolgarsagKodType).
            </xs:documentation>
        </xs:annotation>
    </xs:element>
    <xs:element name="nem" nillable="true" type="NemType">
        <xs:annotation>
            <xs:documentation>
                Gender of the user (see NemType).
            </xs:documentation>
        </xs:annotation>
    </xs:element>
    <xs:element name="okmanyTipus" nillable="true" type="OkmanyTipusType">
        <xs:annotation>
            <xs:documentation>
                Type of the document
                suitable for personal identification
                shown by the user upon registration (see
                OkmanyTipusType).
            </xs:documentation>
        </xs:annotation>
    </xs:element>
    <xs:element name="okmanyAzonositoSzam" nillable="true" type="xs:string">
        <xs:annotation>
            <xs:documentation>
                ID number of the document
                suitable for personal identification
                shown by the user upon registration.
            </xs:documentation>
        </xs:annotation>
    </xs:element>

</xs:sequence>

</xs:complexType>

<xs:complexType name="TavozoVendegType">
    <xs:sequence>
        <xs:element name="erkezesAzonosito" type="UUIDType">
            <xs:annotation>
                <xs:documentation>
                    ID pertaining to the arrival of the guest, considered to be unique for each accommodation
                    (not GUID). The same value has to be transmitted upon the

```

```

        arrival and departure of the given guest to make it possible to connect
        the guest's departure to their arrival.
    </xs:documentation>
</xs:annotation>
</xs:element>
<xs:element name="tavozasIdeje" type="xs:dateTime">
    <xs:annotation>
        <xs:documentation>
            The exact date and time of deregistration. ISO 8601
            date and time
            format, a string of characters complete
            with time zone.
        </xs:documentation>
    </xs:annotation>
</xs:element>
</xs:sequence>
</xs:complexType>

<xs:complexType name="ValidaciosUzenetType">
    <xs:sequence>
        <xs:element name="ellenorzoString" type="xs:string">
            <xs:annotation>
                <xs:documentation>
                    Control string from PMS. The value to be entered in this field must be generated on the basis of the RSA-SHA256
algorithm.
                    This may be a combination of multiple elements, where the elements are combined by using the '|' (pipe) tab
characters.
                </xs:documentation>
            </xs:annotation>
        </xs:element>
        <xs:element name="alairoTanusitvany" type="xs:string">
            <xs:annotation>
                <xs:documentation>
                    DER-format Base64-encoded binary certificate containing the public key of the pair of keys
                    required for attaching a signature.
                </xs:documentation>
            </xs:annotation>
        </xs:element>
        <xs:element name="alairas" type="xs:string">
            <xs:annotation>
                <xs:documentation>
                    The value of the control string signed with the signer's certificate.
                    Signature is attached with the
                    private key of the accommodation's signature certificate in accordance with the RSA-SHA256 algorithm.
                    The signature is generated as follows:
                    1. take the SHA-256 hash value of the control string
                    2. encrypt the resulting hash value with the
                    private key of the accommodation's signature certificate in accordance with the RSA algorithm.
                </xs:documentation>
            </xs:annotation>

```

```

        </xs:element>
    </xs:sequence>
</xs:complexType>

<xs:simpleType name="AllampolgarsagKodType">
    <xs:restriction base="xs:string">
        <xs:pattern value="[A-Z]{2}">
        </xs:pattern>
    </xs:restriction>
</xs:simpleType>

<xs:simpleType name="NemType">
    <xs:restriction base="xs:string">
        <xs:pattern value="NO|FERFI|EGYEB_VAGY_NEM_ISMERT">
        </xs:pattern>
    </xs:restriction>
</xs:simpleType>

<xs:simpleType name="OkmanyTipusType">
    <xs:restriction base="xs:string">
        <xs:pattern value="SZEM_IG|UTLEVEL|VEZ_ENG|EGYEB">
        </xs:pattern>
    </xs:restriction>
</xs:simpleType>

<xs:simpleType name="UUIDType">
    <xs:restriction base="xs:string">
        <xs:pattern value="[a-f0-9]{8}-[a-f0-9]{4}-[a-f0-9]{4}-[a-f0-9]{4}-[a-f0-9]{12}">
        </xs:pattern>
    </xs:restriction>
</xs:simpleType>

<xs:complexType name="SzallasHelyType">
    <xs:sequence>
        <xs:element name="adatszolgaltatasiAzonosito" type="xs:string">
            <xs:annotation>
                <xs:documentation>
                    NTAK data provision identifier of the accommodation whose details will have been
                    uploaded in the request. Additional information
                    on the identification of accommodations and PMS software
                    should be expected later.
                </xs:documentation>
            </xs:annotation>
        </xs:element>
        <xs:element name="szallasNev" type="xs:string">
            <xs:annotation>
                <xs:documentation>
                    Name of the accommodation.
                </xs:documentation>
            </xs:annotation>
        </xs:element>
    </xs:sequence>
</xs:complexType>

```

```

        </xs:element>
        <xs:element name="szallashelySzolgaltatoAdoszam" type="AdoszamType">
          <xs:annotation>
            <xs:documentation>
              Tax number of the accommodation provider operating
              the accommodation (see AdoszamType).
            </xs:documentation>
          </xs:annotation>
        </xs:element>
        <xs:element name="szallashelySzolgaltatoNev" type="xs:string">
          <xs:annotation>
            <xs:documentation>
              Name of the accommodation provider operating
              the accommodation.
            </xs:documentation>
          </xs:annotation>
        </xs:element>
      </xs:sequence>
    </xs:complexType>

    <xs:simpleType name="AdoszamType">
      <xs:restriction base="xs:string">
        <xs:pattern value="[0-9]{8}-[0-9]-[0-9]{2}">
        </xs:pattern>
      </xs:restriction>
    </xs:simpleType>

    <xs:simpleType name="BooleanStringType">
      <xs:restriction base="xs:string">
        <xs:pattern value="TRUE|FALSE|Y|N|YES|NO|1|0|IGEN|NEM|I|N">
        </xs:pattern>
      </xs:restriction>
    </xs:simpleType>

    <xs:complexType name="BekuldetlenAdatType">
      <xs:sequence>
        <xs:element name="uzenetAzonosito" type="UUIDType">
          <xs:annotation>
            <xs:documentation>
              Unique UUID
              -type message identifier generated by sending software (see UUIDType).
            </xs:documentation>
          </xs:annotation>
        </xs:element>
        <xs:element name="adatszolgaltatasiAzonosito" type="xs:string">
          <xs:annotation>
            <xs:documentation>
              NTAK data provision identifier of the accommodation whose details have
              been uploaded in the request.
            </xs:documentation>
          </xs:annotation>
        </xs:element>
      </xs:sequence>
    </xs:complexType>

```



```

                </xs:annotation>
            </xs:element>
            <xs:element minOccurs="0" name="hibaUzenet" type="xs:string">
                <xs:annotation>
                    <xs:documentation>
                        Error message received upon failed attempt to transmit the data or
                        the error message sent by the Storage Unit upon faulty transmission.
                    </xs:documentation>
                </xs:annotation>
            </xs:element>
        </xs:sequence>
    </xs:complexType>

    <xs:simpleType name="BekuldetlenAdatListaType">
        <xs:restriction base="xs:string">
            <xs:enumeration value="NEMBEKULDOTT"/>
            <xs:enumeration value="HIBAS"/>
        </xs:restriction>
    </xs:simpleType>

    <!-- ***** -->

</xs:schema>
</wsdl:types>
<wsdl:message name="allapotLekerdezesRequest">
    <wsdl:part element="tns:allapotLekerdezesRequest" name="allapotLekerdezesRequest">
    </wsdl:part>
</wsdl:message>
<wsdl:message name="erkezesiAdatokBekuldeseRequest">
    <wsdl:part element="tns:erkezesiAdatokBekuldeseRequest" name="erkezesiAdatokBekuldeseRequest">
    </wsdl:part>
</wsdl:message>
<wsdl:message name="tavozasiAdatokBekuldeseRequest">
    <wsdl:part element="tns:tavozasiAdatokBekuldeseRequest" name="tavozasiAdatokBekuldeseRequest">
    </wsdl:part>
</wsdl:message>
<wsdl:message name="allapotLekerdezesResponse">
    <wsdl:part element="tns:allapotLekerdezesResponse" name="allapotLekerdezesResponse">
    </wsdl:part>
</wsdl:message>
<wsdl:message name="bekuldetlenAdatListaResponse">
    <wsdl:part element="tns:bekuldetlenAdatListaResponse" name="bekuldetlenAdatListaResponse">
    </wsdl:part>
</wsdl:message>
<wsdl:message name="tavozasiAdatokBekuldeseResponse">
    <wsdl:part element="tns:tavozasiAdatokBekuldeseResponse" name="tavozasiAdatokBekuldeseResponse">
    </wsdl:part>
</wsdl:message>
<wsdl:message name="bekuldetlenAdatListaRequest">

```

```

    <wsdl:part element="tns:bekuldetlenAdatListaRequest" name="bekuldetlenAdatListaRequest">
    </wsdl:part>
</wsdl:message>
<wsdl:message name="erkezesiAdatokBekuldeseResponse">
    <wsdl:part element="tns:erkezesiAdatokBekuldeseResponse" name="erkezesiAdatokBekuldeseResponse">
    </wsdl:part>
</wsdl:message>
<wsdl:portType name="PmsThfPort">
    <wsdl:operation name="allapotLekerdezes">
        <wsdl:input message="tns:allapotLekerdezesRequest" name="allapotLekerdezesRequest">
        </wsdl:input>
        <wsdl:output message="tns:allapotLekerdezesResponse" name="allapotLekerdezesResponse">
        </wsdl:output>
    </wsdl:operation>
    <wsdl:operation name="erkezesiAdatokBekuldese">
        <wsdl:input message="tns:erkezesiAdatokBekuldeseRequest" name="erkezesiAdatokBekuldeseRequest">
        </wsdl:input>
        <wsdl:output message="tns:erkezesiAdatokBekuldeseResponse" name="erkezesiAdatokBekuldeseResponse">
        </wsdl:output>
    </wsdl:operation>
    <wsdl:operation name="tavozasiAdatokBekuldese">
        <wsdl:input message="tns:tavozasiAdatokBekuldeseRequest" name="tavozasiAdatokBekuldeseRequest">
        </wsdl:input>
        <wsdl:output message="tns:tavozasiAdatokBekuldeseResponse" name="tavozasiAdatokBekuldeseResponse">
        </wsdl:output>
    </wsdl:operation>
    <wsdl:operation name="bekuldetlenAdatLista">
        <wsdl:input message="tns:bekuldetlenAdatListaRequest" name="bekuldetlenAdatListaRequest">
        </wsdl:input>
        <wsdl:output message="tns:bekuldetlenAdatListaResponse" name="bekuldetlenAdatListaResponse">
        </wsdl:output>
    </wsdl:operation>
</wsdl:portType>
<wsdl:binding name="PmsThfPortSoap11" type="tns:PmsThfPort">
    <soap:binding style="document" transport="http://schemas.xmlsoap.org/soap/http"/>
    <wsdl:operation name="allapotLekerdezes">
        <soap:operation soapAction=""/>
        <wsdl:input name="allapotLekerdezesRequest">
            <soap:body use="literal"/>
        </wsdl:input>
        <wsdl:output name="allapotLekerdezesResponse">
            <soap:body use="literal"/>
        </wsdl:output>
    </wsdl:operation>
    <wsdl:operation name="erkezesiAdatokBekuldese">
        <soap:operation soapAction=""/>
        <wsdl:input name="erkezesiAdatokBekuldeseRequest">
            <soap:body use="literal"/>
        </wsdl:input>
        <wsdl:output name="erkezesiAdatokBekuldeseResponse">

```

```

        <soap:body use="literal"/>
    </wsdl:output>
</wsdl:operation>
<wsdl:operation name="tavozasiAdatokBekuldese">
    <soap:operation soapAction=""/>
    <wsdl:input name="tavozasiAdatokBekuldeseRequest">
        <soap:body use="literal"/>
    </wsdl:input>
    <wsdl:output name="tavozasiAdatokBekuldeseResponse">
        <soap:body use="literal"/>
    </wsdl:output>
</wsdl:operation>
<wsdl:operation name="bekuldetlenAdatLista">
    <soap:operation soapAction=""/>
    <wsdl:input name="bekuldetlenAdatListaRequest">
        <soap:body use="literal"/>
    </wsdl:input>
    <wsdl:output name="bekuldetlenAdatListaResponse">
        <soap:body use="literal"/>
    </wsdl:output>
</wsdl:operation>
</wsdl:binding>
<wsdl:service name="PmsThfPortService">
    <wsdl:port binding="tns:PmsThfPortSoap11" name="PmsThfPortSoap11">
        <soap:address location="http://10.162.172.30:8443/ws"/>
    </wsdl:port>
</wsdl:service>
</wsdl:definitions>

```

## 4. Error handling, validation

The content of the arrival and departure messages sent by the PMSs will be checked. The THF checks fields for being filled out, the formats of the data and the sizes of the data in the various fields because of encryption size limits.

### 4.1. Field validations, error messages

The validation criteria and the error messages are presented in the following table:

Field	Validation	Error code	Error message
<i>Arrival</i>			
uzenetAzonosito	Is there a message ID (mandatory field)	EF0001	Message ID missing
	Format check [a-f0-9]{8}-[a-f0-9]{4}-[a-f0-9]{4}-[a-f0-9]{4}-[a-f0-9]{12}	EF0003	Invalid message ID. Correct value e.g.: 01234567-89ab-cdef-0123-ef0123456789
adatszolgaltatasiAzonosito	Is there a data provision ID (mandatory field)	EF0005	Data provision ID missing or invalid
	Length max. 8 characters	EF0006	Wrong accommodation ID. (8 characters, [a-zA-Z0-9])
szallasNev	Name of accommodation missing, zero, blank (mandatory field)	EF0008	Name of accommodation missing or blank
	Length of name of accommodation max. 200 characters	EF0009	Length of name of accommodation wrong (max. 200 characters)
szallashelySzolgaltatoAdoszam	Accommodation provider's tax number check (mandatory field)	EF0010	Accommodation provider's tax number missing
	Wrong tax number format: not 11 digits	EF0011	Invalid tax number. Correct value e.g.: 78665544-3-22
szallashelySzolgaltatoNev	Name of accommodation provider missing, zero, blank (mandatory field)	EF0012	Name of accommodation provider missing or blank
	Length max. 200 characters	EF0013	Length of name of accommodation provider wrong (max. 200 characters)

Field	Validation	Error code	Error message
bejelentesIdopontja	Date of notification missing, zero, blank or of wrong format	EF0015	Date of notification missing/invalid. Correct format: 2000-01-01T12:00:00.000+02:00
	It cannot be a future value or one predating the one set by parameter	EF0016	Date/time of notification is in the future or more than {parameter} earlier
erkezoVendeg	Arriving guest data missing or exceeding the parameter set	EF0017	Arriving guest data missing or exceeding the parameter set. (Value set: {parameter})
erkezesAzonosito	Guest arrival ID missing or zero (mandatory field)	EF0018	Guest arrival ID missing
	Length check	EF0019	Length of guest arrival ID is wrong Correct value e.g.: 01234567-89ab-cdef-0123-ef0123456789
	Format check	EF0020	Guest arrival ID invalid Correct value e.g.: 01234567-89ab-cdef-0123-ef0123456789
	Has message with identical guest arrival ID been received within the time frame set in the parameter	EF0021	Duplicate guest arrival ID
erkezesIdeje	Date/time of arrival is missing/wrong value/wrong format (mandatory field)	EF0029	Date/time of arrival is missing/invalid Correct format: 2000-01-01T12:00:00.000+02:00")
	Date/time of arrival cannot be less than parameter_1 earlier or more than parameter_2 later than the current date/time	EF0030	Date/time of arrival is outside the acceptable range or is later than the expected date/time of departure. Date/time of arrival cannot be less than {parameter1} earlier or more than {parameter2} later than the current date/time
tavozasVarhatoDatum a	Expected date of departure missing/wrong value/wrong format (mandatory field)	EF0032	Expected date of departure missing/invalid. Correct format: 2000-01-01
	Its correct value is below the value of current date plus parameter_1 and above the value of the current date minus paraméter_2	EF0033	Expected date of departure is outside the acceptable range or is not later than the expected date/time of arrival. Its correct value is below the value of current date plus {parameter1} and

Field	Validation	Error code	Error message
			above the value of the current date minus <i>{parameter2}</i>
csaladnev (manualisanRogzitettdat)	Cannot be blank if: – given name (first name) has been entered manually – neither part of the name has been entered from document	EF0034	Family name (surname) missing
	Length check (Max. 200 characters, max. 254 byte (UTF8 encoded))	EF0035	Length of family name (surname) is wrong. (Max. 200 characters, max. 254 byte (UTF8 encoded))
utonev (manualisanRogzitettdat)	Cannot be blank if: – family name (surname) has been entered manually – neither part of the name has been entered from document	EF0036	Given name (first name) is missing
	Length check (Max. 200 characters, max. 254 byte (UTF8 encoded))	EF0037	Length of given name (first name) is wrong. (Max. 200 characters, max. 254 byte (UTF8 encoded))
szuletesiCsaladnev (manualisanRogzitettdat)	If there is a manually recorded given name (first name) at birth, it cannot be blank	EF0039	Family name (surname) at birth is missing
	Length check (Max. 200 characters, max. 254 byte (UTF8 encoded))	EF0040	Length of family name (surname) at birth is wrong. (Max. 200 characters, max. 254 byte (UTF8 encoded))
szuletesiUtonev (manualisanRogzitettdat)	If there is a manually recorded family name (surname) at birth, it cannot be blank	EF0041	Given name (first name) at birth is missing
	Length check (Max. 200 characters, max. 254 byte (UTF8 encoded))	EF0042	Length of given name (first name) at birth is wrong. (Max. 200 characters, max. 254 byte (UTF8 encoded))
szuletesiDatum (manualisanRogzitettdat)	Date of birth is missing/wrong value/wrong format (if no data from document reader is available, it is mandatory from PMS)	EF0047	Date of birth missing/invalid. Correct format: 2000-01-01
	Date of birth cannot be a future date or predate the	EF0048	The date of birth is outside the acceptable range. Date of birth cannot

Field	Validation	Error code	Error message
	date earlier by the number of years set by parameter		be a future date or predate the date earlier by {parameter} years
	Length check (Max. 200 characters, max. 254 byte (UTF8 encoded))	EF0051	Place of birth is too long. (Max. 200 characters, max. 254 byte (UTF8 encoded))
anyaCsaladnev (manualisanRogzitettA dat)	If there is a manually recorded mother's given name (first name), it cannot be blank	EF0052	Mother's family name (surname) missing
	Length check (Max. 200 characters, max. 254 byte (UTF8 encoded))	EF0053	Mother's family name (surname) is too long. (Max. 200 characters, max. 254 byte (UTF8 encoded))
anyaUtonev (manualisanRogzitettA dat)	If there is a manually recorded mother's family name (surname), it cannot be blank	EF0054	Mother's given name (first name) missing
	Length check (Max. 200 characters, max. 254 byte (UTF8 encoded))	EF0055	Mother's given name (first name) is too long. (Max. 200 characters, max. 254 byte (UTF8 encoded))
allampolgarsagKod (manualisanRogzitettA dat)	Citizenship code is missing (this must be specified in at least one field)	EF0059	Citizenship code is missing
	Citizenship code is wrong value/wrong format	EF0060	Citizenship code is wrong
nem (manualisanRogzitettA dat)	Gender is missing	EF0061	Gender of the guest is missing
	Wrong value	EF0062	Invalid gender value. Correct values: NO, FERFI, EGYEB_VAGY_NEM_ISMERT
okmanyTipus (manualisanRogzitettA dat)	Document type is missing (this must be specified in at least one field)	EF0063	Document type is missing
	Document type is wrong value	EF0064	Invalid document type. Correct values: SZEM_IG, UTLEVEL, VEZ_ENG, EGYEB
okmanyAzonositoSzam (manualisanRogzitettA dat)	Document ID is missing (this must be specified in at least one field)	EF0065	Document ID number is missing

Field	Validation	Error code	Error message
	Length check (max. 100)	EF0067	Document ID is too long (max. 100 characters)
vizumEngedelySzam	Length check (max. 100)	EF0069	Visa, permit number is too long (max. 100 characters)
beutazasDatuma	Format check; cannot be a future date	EF0072	Date of entry is missing/invalid/future date. Correct format: 2000-01-01
beutazasHelye	Length check (Max. 200 characters, max. 254 byte (UTF8 encoded))	EF0075	Place of entry is too long. (Max. 200 characters, max. 254 byte (UTF8 encoded))
csaladnev (okmanybolBeolvasottAdat)	Length check (Max. 200 characters, max. 254 byte (UTF8 encoded))	EF0101	Length of family name (surname) read from document is wrong. (Max. 200 characters, max. 254 byte (UTF8 encoded))
utonev (okmanybolBeolvasottAdat)	Length check (Max. 200 characters, max. 254 byte (UTF8 encoded))	EF0102	Length of given name (first name) read from document is wrong. (Max. 200 characters, max. 254 byte (UTF8 encoded))
szuletesiCsaladnev (okmanybolBeolvasottAdat)	Length check (Max. 200 characters, max. 254 byte (UTF8 encoded))	EF0103	Length of family name (surname) at birth, read from document, is wrong. (Max. 200 characters, max. 254 byte (UTF8 encoded))
szuletesiUtonev (okmanybolBeolvasottAdat)	Length check (Max. 200 characters, max. 254 byte (UTF8 encoded))	EF0104	Length of given name (first name) at birth, read from document, is wrong. (Max. 200 characters, max. 254 byte (UTF8 encoded))
szuletesiDatum (okmanybolBeolvasottAdat)	Date of birth missing/wrong value/wrong format	EF0105	Date of birth read from document is invalid. Correct format: 2000-01-01
	Date of birth cannot be a future date or predate the date earlier by the number of years set by parameter	EF0106	The date of birth read from document is outside the acceptable range. Date of birth cannot be a future date or predate the date earlier by (parameter) years
szuletesiHely (okmanybolBeolvasottAdat)	Length check (Max. 200 characters, max. 254 byte (UTF8 encoded))	EF0107	Place of birth read from document is too long. (Max. 200 characters, max. 254 byte (UTF8 encoded))
anyjaCsaladnev (okmanybolBeolvasottAdat)	Length check (Max. 200 characters, max. 254 byte (UTF8 encoded))	EF0108	Length of mother's family name (surname) read from document is wrong. (Max. 200 characters, max. 254 byte (UTF8 encoded))



Field	Validation	Error code	Error message
anyaUtonev (okmanybolBeolvasott Adat)	Length check (Max. 200 characters, max. 254 byte (UTF8 encoded))	EF0109	Length of mother's given name (first name) read from document is wrong. (Max. 200 characters, max. 254 byte (UTF8 encoded))
allampolgarsagKod (okmanybolBeolvasott Adat)	Citizenship code is wrong value/wrong format	EF0110	Citizenship code, read from document, is wrong
nem (okmanybolBeolvasott Adat)	Wrong value	EF0111	Gender value, read from document, is wrong.
okmanyTipus (okmanybolBeolvasott Adat)	Document type is wrong value	EF0112	Document type, read from document, is wrong. Correct values: SZEM_IG, UTLEVEL, VEZ_ENG, EGYEB
okmanyAzonositoSzam (okmanybolBeolvasott Adat)	Length check (max. 100)	EF0113	Document ID, read from document, is too long (max. 100 characters)
<b>Departure</b>			
tavozasIdeje	Date of departure is missing/wrong value/wrong format  (mandatory field)	EF0088	Date of departure is missing/invalid Correct format: 2000-01-01T12:00:00.000+02:00
	The date of departure cannot be too long ahead in the future (smaller than the current dateTime plus a given parameter); it cannot be too long behind in the past (higher than the current dateTime minus another given parameter); and it must be later than the date of arrival (if it is still available)	EF0089	The date of departure is outside the acceptable range. Date/time of departure cannot be less than <i>{parameter1}</i> earlier or more than <i>{parameter2}</i> later than the current date/time
<b>Certificate and signature verification</b>			
alairoTanusitvany	Format check of certificate	EF0200	The attached certificate is not of the Gbase64 DER format
	Truststore file check	EF0201	The truststore file is not valid or the certificate cannot be retrieved from it
	Validity check of the certificate	EF0202	The enclosed certificate is not valid, according to the certificate chain

Field	Validation	Error code	Error message
	Comparison of the data provision ID with the one specified in the certificate	EF0203	The data provision ID does not match the one in the accommodation data
alairas	Verification of the accommodation validation message	EF0204	Accommodation validation message signature is not valid
ellenorzoString	Checking of the Validation String in the accommodation validation message	EF0205	The validation string value in the accommodation validation message does not match the transmitted data
	Validity check of the certificate	EF0206	The enclosed certificate has been withdrawn
crl file	Signature verification	EF0207	Crl file signature is wrong
	crl file check	EF0208	Crl file is missing or wrong
	crl file issuer's check	EF0209	The certificate of the issuer of the crl is missing or wrong
Query of THF list of unsent data: bekuldetlenAdatListaRequest	Data type value: „NEMBEKULDOTT” or „HIBAS”.	EF7050	The given data type does not exist.

#### 4.2. Correction

The law does not contain a reference to any possibility to correct data. The data are expected to be sent upon receipt of the guest, at which point the complete set of data to be transmitted should be available. No adjustments can be made to the data that have been transmitted.

Guest data recorded late (beyond 24 hours) must be transmitted such that the actual date/time of arrival is to be specified as date/time of arrival or if it cannot be established, it should be 12:00 on the day of arrival.

In the case of wrong arrival/reception data a departure message is to be sent with the given reception ID. The reception ID cannot be reused: the THF checks this and enforces the use of a new reception ID.

In case the PMS couldn't send one or more messages to the THF due to technical reasons, it has to try to resend with an increasing retry period.

Suggested resend procedure:

- The first three (3) attempts should be retried immediately.
- Then it retries with these delay periods in this order: random between 1 and 60 seconds, 10 minutes, 1 hour, 6 hours
- Every 24 hours if still needed.

### 4.3. Validation rules based on statutory regulations

Government Decree 584/2021. (X. 14.) states that persons under the age of 14 do not need to present their identification documents, and it is not mandatory to record their document ID, effective 29<sup>th</sup> October 2021.

To comply this regulation, THF checks the age of the guest by its date of birth on the date of arrival (not the CDGI data submission), and if the guest is under the age of 14, THF considers the document id (*okmanyAzonositoSzam*) and document type (*okmanyTipus*) fields optional.

### 4.4. Country codes accepted ba THF

This table lists the ISO 3166 country codes accepted in the *allampolgarsagKod* field:

2-letter code	3-letter code	country/territory
AF	AFG	Afghanistan
AL	ALB	Albania
DZ	DZA	Algeria
AD	AND	Andorra
AO	AGO	Angola
AG	ATG	Antigua and Barbuda
AR	ARG	Argentina
AU	AUS	Australia
AT	AUT	Austria
AZ	AZE	Azerbaijan
BS	BHS	Bahamas
BH	BHR	Bahrain
BD	BGD	Bangladesh
BB	BRB	Barbados
BE	BEL	Belgium
BZ	BLZ	Belize
BJ	BEN	Benin
BT	BTN	Bhutan
GW	GNB	Guinea-Bissau
BO	BOL	Bolivia
BA	BIH	Bosnia and Herzegovina
BW	BWA	Botswana
BR	BRA	Brazil
BN	BRN	Brunei Darussalam
BG	BGR	Bulgaria
BF	BFA	Burkina Faso
BI	BDI	Burundi
CL	CHL	Chile

CY	CYP	Cyprus
KM	COM	Comoros
CR	CRI	Costa Rica
TD	TCD	Chad
CZ	CZE	Czechia
DK	DNK	Denmark
ZA	ZAF	South Africa
KR	KOR	Korea (the Republic of)
DM	DMA	Dominica
DO	DOM	Dominican Republic
DJ	DJI	Djibouti
EC	ECU	Ecuador
GQ	GNQ	Equatorial Guinea
AE	ARE	United Arab Emirates
GB	GBR	United Kingdom of Great Britain and Northern Ireland
EG	EGY	Egypt
CI	CIV	Côte d'Ivoire
ER	ERI	Eritrea
KP	PRK	Korea (the Democratic People's Republic of)
MK	MKD	North Macedonia
EE	EST	Estonia
ET	ETH	Ethiopia
BY	BLR	Belarus
FJ	FJI	Fiji
FI	FIN	Finland
ES	ESP	Spain
FR	FRA	France
PH	PHL	Philippines
GA	GAB	Gabon
GM	GMB	Gambia
GH	GHA	Ghana
GR	GRC	Greece
GD	GRD	Grenada
GE	GEO	Georgia
GT	GTM	Guatemala
GN	GIN	Guinea
GY	GUY	Guyana
HT	HTI	Haiti
NL	NLD	Netherlands
HN	HND	Honduras
HR	HRV	Croatia
IN	IND	India
ID	IDN	Indonesia
IQ	IRQ	Iraq
IR	IRN	Iran

IE	IRL	Ireland
IS	ISL	Iceland
IL	ISR	Israel
JM	JAM	Jamaica
JP	JPN	Japan
YE	YEM	Yemen
JO	JOR	Jordan
KH	KHM	Cambodia
CM	CMR	Cameroon
CA	CAN	Canada
QA	QAT	Qatar
KZ	KAZ	Kazakhstan
TL	TLS	Timor-Leste
KE	KEN	Kenya
CN	CHN	China
KG	KGZ	Kyrgyzstan
KI	KIR	Kiribati
CO	COL	Colombia
CD	COD	Congo (the Democratic Republic of the)
CG	COG	Congo (the)
CF	CAF	Central African Republic
CU	CUB	Cuba
KW	KWT	Kuwait
LA	LAO	Lao People's Democratic Republic
PL	POL	Poland
LS	LSO	Lesotho
LV	LVA	Latvia
LB	LBN	Lebanon
LR	LBR	Liberia
LY	LBY	Libya
LI	LIE	Liechtenstein
LT	LTU	Lithuania
LU	LUX	Luxembourg
MG	MDG	Madagascar
HU	HUN	Hungary
MY	MYS	Malaysia
MW	MWI	Malawi
MV	MDV	Maldives
ML	MLI	Mali
MT	MLT	Malta
MA	MAR	Morocco
MH	MHL	Marshall Islands
MR	MRT	Mauritania
MU	MUS	Mauritius
MX	MEX	Mexico

MM	MMR	Myanmar
FM	FSM	Micronesia
MD	MDA	Moldova
MC	MCO	Monaco
MN	MNG	Mongolia
ME	MNE	Montenegro
MZ	MOZ	Mozambique
NA	NAM	Namibia
NR	NRU	Nauru
DE	DEU	Germany
NP	NPL	Nepal
NI	NIC	Nicaragua
NE	NER	Niger
NG	NGA	Nigeria
NO	NOR	Norway
IT	ITA	Italy
OM	OMN	Oman
RU	RUS	Russian Federation
AM	ARM	Armenia
PK	PAK	Pakistan
PW	PLW	Palau
PA	PAN	Panama
PG	PNG	Papua New Guinea
PY	PRY	Paraguay
PE	PER	Peru
PT	PRT	Portugal
RO	ROU	Romania
RW	RWA	Rwanda
KN	KNA	Saint Kitts and Nevis
LC	LCA	Saint Lucia
VC	VCT	Saint Vincent and the Grenadines
SB	SLB	Solomon Islands
SV	SLV	El Salvador
SM	SMR	San Marino
ST	STP	Sao Tome and Principe
SC	SYC	Seychelles
SL	SLE	Sierra Leone
LK	LKA	Sri Lanka
SR	SUR	Suriname
CH	CHE	Switzerland
SE	SWE	Sweden
WS	WSM	Samoa
SA	SAU	Saudi Arabia
SN	SEN	Senegal
RS	SRB	Serbia

SG	SGP	Singapore
SY	SYR	Syrian Arab Republic
SK	SVK	Slovakia
SI	SVN	Slovenia
SO	SOM	Somalia
SD	SDN	Sudan
SZ	SWZ	Eswatini
TJ	TJK	Tajikistan
TZ	TZA	Tanzania
TH	THA	Thailand
TG	TGO	Togo
TO	TON	Tonga
TR	TUR	Turkey
TT	TTO	Trinidad and Tobago
TN	TUN	Tunisia
TV	TUV	Tuvalu
TM	TKM	Turkmenistan
UG	UGA	Uganda
NZ	NZL	New Zealand
UA	UKR	Ukraine
UY	URY	Uruguay
US	USA	United States of America
UZ	UZB	Uzbekistan
VU	VUT	Vanuatu
VA	VAT	Holy See
VE	VEN	Venezuela
VN	VNM	Viet Nam
ZM	ZMB	Zambia
ZW	ZWE	Zimbabwe
CV	CPV	Cabo Verde
AS	ASM	American Samoa
VI	VIR	Virgin Islands (U.S.)
AI	AIA	Anguilla
AW	ABW	Aruba
BM	BMU	Bermuda
BV	BVT	Bouvet Island
IO	IOT	British Indian Ocean Territory
VG	VGB	Virgin Islands (British)
CK	COK	Cook Islands
CW	CUW	Curaçao
GS	SGS	South Georgia and the South Sandwich Islands
MP	MNP	Northern Mariana Islands
FK	FLK	Falkland Islands
FO	FRO	Faroe Islands

TF	ATF	French Southern Territories
PF	PYF	French Polynesia
GI	GIB	Gibraltar
GL	GRL	Greenland
GU	GUM	Guam
GG	GGY	Guernsey
HM	HMD	Heard Island and McDonald Islands
JE	JEY	Jersey
KY	CYM	Cayman Islands
CX	CXR	Christmas Island
BQ	BES	Caribbean Netherlands
CC	CCK	Coconut (Keeling) Islands
IM	IMN	Man
YT	MYT	Mayotte
MS	MSR	Montserrat
NU	NIU	Niue
NF	NFK	Norfolk Island
PN	PCN	Pitcairn
PR	PRI	Puerto Rico
BL	BLM	Saint-Barthélemy
MF	MAF	Saint-Martin
PM	SPM	Saint-Pierre and Miquelon
SX	SXM	Sint Maarten
SH	SHN	Saint Helena
TK	TKL	Tokelau Islands
TC	TCA	Turks and Caicos Islands
NC	NCL	New Caledonia
WF	WLF	Wallis and Futuna
AA	AAA	
QM	QMA	
QN	QNA	
QO	QOA	
QP	QPA	
QQ	QQA	
QR	QRA	
QS	QSA	
QT	QTA	
QU	QUA	
QV	QVA	
QW	QWA	
QX	QXA	
QY	QYA	
QZ	QZA	
XA	XAA	
XB	XBA	



XC	XCA	
XD	XDA	
XE	XEA	
XF	XFA	
XG	XGA	
XH	XHA	
XI	XIA	
XJ	XJA	
XL	XLA	
XM	XMA	
XN	XNA	
XO	XOA	
XP	XPA	
XQ	XQA	
XR	XRA	
XS	XSA	
XT	XTA	
XU	XUA	
XV	XVA	
XW	XWA	
XX	XXA	
XY	XYA	
XZ	XZA	
ZZ	ZZA	
EH	ESH	Western Sahara
PS	PSE	Palestine
TW	TWN	Taiwan
XK	XKA	Kosovo
UM	UMI	
AQ	ATA	Antarctica
AX	ALA	Aland
GF	GUF	French Guiana
GP	GLP	Guadeloupe
HK	HKG	Hong Kong
MO	MAC	Macao
MQ	MTQ	Martinique
RE	REU	Réunion
SJ	SJM	Spitsbergen and Jan Mayen Island
SS	SSD	South Sudan